

# sightlines

usitt

F E B R U A R Y 1 9 9 8

## IN THIS ISSUE

1, 12  
LONG BEACH CONFERENCE  
& STAGE EXPO

2  
SCENE DESIGN

3  
ARCHITECTURE

NEWS FROM THE NATIONAL

4  
LIGHTING

5  
WADING ON THE WEB

INSERTS  
COSTUME SYMPOSIUM  
1998

YOUNG DESIGNERS AND  
TECHNICIANS AWARDS

CONFERENCE  
REGISTRATION

9  
COSTUMES

CITT NEWS

10

TECH EXPO

GRANTS AND FELLOWSHIPS

## LONG BEACH CONFERENCE & STAGE EXPO

### SOUTH COAST REP SPOTLIGHTED IN OPENING CEREMONIES

South Coast Repertory's Martin Benson, Artistic Director and David Emmes, Producing Artistic Director, recipients of the prestigious De Gaetani Award, will deliver the opening address at the 1998 USITT Annual Conference & Stage Expo. Benson and Emmes will provide us with a glimpse into the successful founding and growth of South Coast Repertory, one of America's leading regional theatres.

In 1964, Benson and Emmes set out to offer world-class theatre to the people of Orange County, California. Their vision, hard work and continued record of achievement have resulted in a superb facility, an outstanding and highly creative production team, and a strong and devoted audience base. The South Coast Repertory story is a remarkable chronicle of achievement and success. Our 1998 De Gaetani Award winners will share their unique experiences in the making of a theatre—South Coast Repertory.

David Emmes is co-founder and Producing Artistic Director. He has received numerous awards for productions he directed during his thirty-four years with South Coast Repertory. In addition to accolades received for his directing, he has been appointed as a consultant to the Orange County Performing Arts Center and a theatre panelist and on-site evaluator for the National Endowment for the Arts. In addition he has served on the Board of



MARTIN BENSON AND DAVID EMMES, CO-FOUNDERS OF SOUTH COAST REPERTORY

the California Theatre Council and the Executive Committee of the League of Resident Theatres. After attending Orange Coast College, Emmes received his B.A. and M.A. from California State University, San Francisco, and his Ph.D. in Theatre and Film from the University of Southern California.

Martin Benson is co-founder and Artistic Director of SCR. Benson has also distinguished himself as a director of note. He was honored with the Drama League Award and has been presented the prestigious Los Angeles Drama Critics Circle Distinguished Achievement in Directing Award an unprecedented six times. Benson received his B.A. in Theatre from California State University, San Francisco.

Martin Benson and David Emmes, together, were the recipients of the 1995 Theatre LA Ovation Award for Lifetime Achievement, and with the South Coast Repertory team, they were honored with a 1988 Tony Award as "Outstanding Resident Professional Theatre." USITT is privileged to welcome Benson and Emmes as our featured speakers at the opening session of the 1998 USITT Annual Conference & Stage Expo.

## CONFERENCE UPDATES

**Conference Hotel Changes Its Name.** The Sheraton Long Beach has joined Westin's distinctive collection of properties and is now called the **Westin Long Beach**. Along with the name change come enhanced amenities and heightened service levels—characteristics that are typical of a Westin Hotel. Effective the week of January 12, USITT conference housing confirmations to those registrants selecting the Sheraton Long Beach will show both hotel names on their confirmations. Registrants who selected the Sheraton Long Beach and have already received their confirmation should just take note of this name change. The Long Beach Area Visitors and Convention Bureau assures us that all taxi drivers and other transportation suppliers are alerted to this change.

**USITT SIGHTLINES** is the national newsletter of United States Institute for Theatre Technology, Inc. We welcome news about USITT activities and industry events. Send your articles and letters to the Editorial Office—email submissions are preferred although we gladly accept typed manuscripts or even scribbles on napkins.

#### EDITORIAL OFFICE:

3001 Springcrest Dr.  
Louisville, KY 40241-2755  
502-426-1211 (voice)  
502-423-7467 (fax)  
dkr@broadwaypress.com

**David Rodger:** Editor  
**Deborah Hazlett:** Art Director

#### ADVERTISING:

Classified ads are accepted in *USITT Sightlines*. Inquiries should be addressed to:

Michelle L. Smith  
USITT  
6443 Ridings Rd.  
Syracuse, NY 13206-1111  
800-93-USITT (voice)  
315-463-6463 (voice)  
315-463-6525 (fax)  
msm@pppmail.appliedtheory.com

**SUBSCRIPTION** to *USITT Sightlines* is part of membership in USITT, The American Association of Design and Production Professionals in the Performing Arts. \$15 is deducted from membership dues to cover the cost of publication. USITT is the United States Center of OISTAT, The International Organization of Scenographers, Technicians, and Architects of Theatre.

**POSTMASTER:** Send address changes to USITT, 6443 Ridings Rd., Syracuse, NY 13206-1111. Periodicals postage is paid at Syracuse, NY.

*USITT Sightlines* (ISSN: 1048-955X) is published monthly, except bimonthly in April/May and July/August, by United States Institute for Theatre Technology, Inc.

Volume XXXVIII Number 2  
© 1998, United States Institute for Theatre Technology, Inc.

## SCENE DESIGN COMMISSION

### A FULL PALLETTE OF HISTORICAL PAINTING TECHNIQUES

Imagine! Three events on three days about early twentieth century scenic painting techniques.

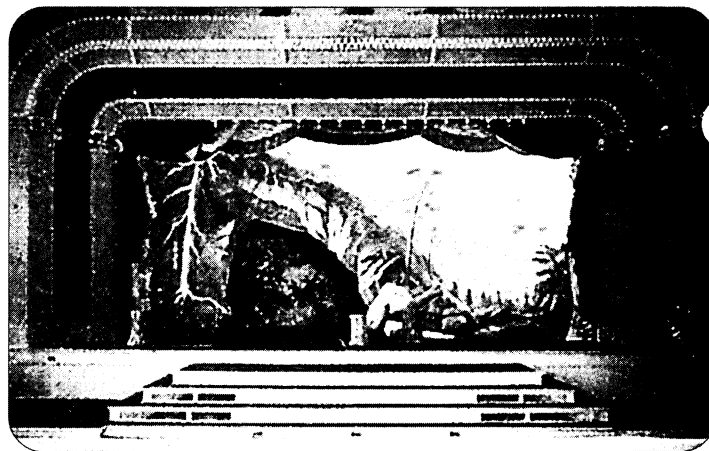
An exceptional Professional Development Workshop, "Drawing, Rendering and Scene Painting: The Historical Method," will be held on Tuesday, March 17 in the scene shop at California State University, Long Beach. (Don't forget to pre-register!) This all-day workshop will give fifteen participants and ten observers a rare opportunity to explore turn-of-the-century painting techniques and learn how scenic artists were able to produce exquisite illusionistic scenery with an amazing economy of brushstrokes using a "wet palette" method with dry pigments. In addition, the workshop leaders, C. Lance Brockman, Bruce Brockman, Rhett Bryson, and Rachel Keebler, assisted by Alan Bryson, Wendy Waszut-Barrett and Megan Wilkerson, will offer advice on incorporating historic techniques in teaching design and scene painting.

All of the presenters for this workshop have extensive experience researching and replicating historical scenery. C. Lance Brockman, workshop co-ordinator, was curator of "Theatre of the Fraternity: Staging the Ritual Space of Scottish Rite Freemasonry, 1896-1929." This marvelous exhibit, presented by the Frederick R. Weisman Art Museum at the University of Minnesota, has traveled to several other museums around the country and will be on display at the University Art Museum, California State University, Long Beach during the USITT conference. In 1987, Prof. Brockman also guest-curated at the Weisman, "The Twin Cities Scenic Collection: Popular Entertainment 1895-1929," an exhibit of rare sketches and scenic models. Beyond the documentation and interpretation of the scenic material culture of this era, he has devoted energy to discovering the materials, tools and processes used by the Victo-

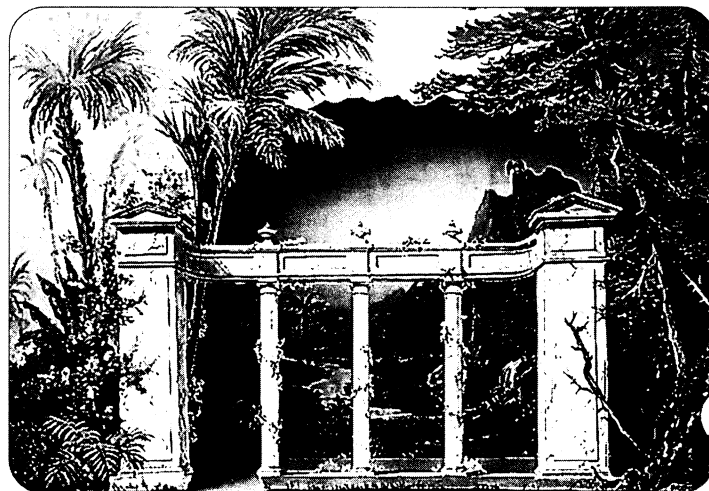
rian and early twentieth century scenic artists. Bruce Brockman is Department Head and Associate Professor of Stage Design at Oklahoma State University. Prof. Brockman has studied and taught historical scene painting techniques and studied the academy approach to classical realist drawing at the Atelier in Minneapolis. He is the author of "Revisiting the Twin Cities Scenic Collection" which was published in the winter 1997 issue of *TD&T*. Rachel Keebler is co-founder of Cobalt Studios in New York. In addition to her extensive experience as a scenic artist in USA 829, Ms. Keebler has painted in numerous historical buildings recreating historical decorative techniques. As a teacher, Rachel has taught scene painting at the North Carolina School for the Arts, Temple University, the Hong Kong Academy of the Performing Arts and done painting

workshops for several USITT sections including one for the Midwest section using the Lyric Opera Scenic Collection of opera scenery from the 1800s. Wendy Waszut-Barrett is a free-lance scenic artist and designer in Minneapolis. Ms. Waszut-Barrett was assistant curator and scenic artist for "Theatre of the Fraternity: Staging the Sacred Space of the Scottish Rite Temple of Freemasonry, 1896-1929" as well as authoring the article of the same name in the summer 1996 issue of *TD&T*.

On Wednesday afternoon, March 18, Lawrence Hill, Lynn Dumenil and Lance Brockman will conduct an interpretative gallery walk-through of the Theatre of the Fraternity exhibit at the Cal State Long Beach museum. Dr. Hill, Professor of Theatre Arts at Western Carolina University has received grants from the North Dakota Hu-



SCENERY INSTALLED CIRCA 1902 IN A SCOTTISH RITE TEMPLE.



AN ARTIST'S SKETCH FOR A BACKDROP AND CUT DROP TO BE USED IN A SCOTTISH RITE INITIATION RITUAL.

PHOTO AND ILLUSTRATION PUBLISHED BY THE FRATERNITY, COURTESY C. LANCE BROCKMAN

manities Council, the National Endowment for the Humanities and USITT for research in nineteenth century scenic design and theatre preservation projects. He is a Fellow of the Institute, and currently USITT Treasurer. Lynn Dumenil is an Historian from Occidental College in California.

Friday morning, March 20, "Theatre Of The Fraternity: Scenery On View" will be an off-site trip to the Pasadena Scottish Rite Temple. Participants will view the magnificent historic drops painted in Little Rock, Arkansas in 1902 and installed in the 1920s. Dr. Larry Hill, Lance Brockman and Rhett Bryson of Furman University will conduct this session and provide insight and instruction into the techniques employed by the scenic artists nearly 100 years ago.

These three events over the course of three days will provide conference attendees an unparalleled opportunity to learn about Victorian and turn-of-the-century scenery. I, for one, plan to take full advantage of the expertise of the presenters, experience first-hand some historical masterpieces, and enjoy the collegiality that these events are bound to engender.

**Kim Williamson**  
Co-Commissioner

## ASTC NEWS

### ASTC SLIDE BASH

This year the American Society of Theatre Consultants will host the Second Annual ASTC Slide Bash at the USITT Annual Conference & Stage Expo in Long Beach. The event will be held on Wednesday, March 18th from 6:00 p.m. to 10:30 p.m. According to organizers Robert Davis and Robert Long, presenters are invited to bring and show slides. Hand-outs and show-and-tells are also welcome. The format as established last year will consist of short presentations of approximately 10 slides in 5 minutes, and we discourage, but allow, longer presentations. Based on last year's experience, presenters should expect the audience to wander in and out, talk, ask ques-

tions, heckle, be occasionally rude, and have a good time. Brevity, levity, sincerity, frivolity, relevance, redolence, pertinence and impertinence are encouraged.

Topics might be a recently completed project, a new project, a project in the works, aspect of a project, old theatres, new theatres, new old theatres, piece of technology, history, news, views, poetry, or something completely irrelevant. The intent is quite serious. Twice each year the ASTC members conduct a similar exchange of information within the organization, with all members encouraged to show-and-tell. This is also an opportunity for the audience to get the earliest look at projects-in-the-works and new technology which might take months or years to get to press.

This is not a forum for manufacturers to present their own products, nor for sales jobs in general. The hook will be waiting off-stage for those who overstay their welcome. Architects, consultants, owners, teachers, students, manufacturers and other individuals are welcome to present anything which is interesting to the audience. Please confirm your participation before the conference, but it's not required.

Contact:

Robert Long, ASTC  
Theatre Projects Consultants  
871 Ethan Allen Highway  
Ridgefield, CT 06877  
tel: 203-431-3949  
fax: 203-431-4790  
e-mail: RHLong2@aol.com

Robert Davis, ASTC  
Robert Davis, Inc.  
37 West 20<sup>th</sup> Street  
New York, NY 10011  
tel: 212-242-0856  
fax: 212-924-2743  
e-mail: rdavisinc@aol.com

**Robert Davis**  
*American Society of  
Theatre Consultants*

## NATIONAL OFFICE

### NEWS FROM THE NATIONAL

It's the final countdown to the USITT Conference & Stage Expo. We are all looking forward to having "the time of our lives" in Long Beach. While at the conference, please stop by the USITT booth to say hello to the National Office Staff. They will be staffing the booth during Stage Expo hours answering any questions that you may have on USITT and member benefits.

*On to news from our members*

#### ■ CONTRIBUTING MEMBER NEWS

**Intertec** announces a new event for the entertainment industry designed for Latin American professionals that will present the entire entertainment spectrum under one roof. Attendees will represent: film, television and video production/post-production; live performance; themed environments; touring productions; sound reinforcement; recording studios; and corporate events. Conference sessions will be presented simultaneously in Spanish and Portuguese and will address the unique challenges of Latin American professionals. TechnoLatina & Instituto de Tecnologia will be held May 5-7, 1999 in Miami, Florida. For more information, please contact Intertec Trade Show & Conference at +1-303-220-0600.

#### ■ SUSTAINING MEMBER NEWS

USITT is proud to announce that it has three new Sustaining members. All three will be exhibiting on the Stage Expo floor in Long Beach. They are as follows:

**American Harlequin Corporation** is a manufacturer of vinyl dance, scenic and display flooring. Located in the Philadelphia area, the company is a subsidiary of British Harlequin of London and sister company to Harlequin International in Luxembourg. **Stage Research, Inc.**, located in Cleveland, Ohio, is the developer of

*continued on page 4* ➤

## HONORARY LIFETIME MEMBERS

**RICHARD L. ARNOLD**  
**WILLARD F. BELLMAN**  
**JOEL E. RUBIN**  
**SAMUEL H. SCRIPPS**  
**TOM WATSON**

## CONTRIBUTING MEMBERS

**ANDERSEN & CO.**  
**ARTEC CONSULTANTS INC**  
**THE BARBIZON COMPANIES**  
**ELECTRONIC THEATRE  
CONTROLS (ETC)**  
**ENTERTAINMENT SERVICES &  
TECHNOLOGY ASSOCIATION  
(ESTA)**  
**GOTHIC COATINGS, INC.**  
**THE GREAT AMERICAN MARKET**  
**INTERAMERICA STAGE, INC.**  
**KM FABRICS, INC.**  
**KRYOLAN CORPORATION**  
**NEIMAN SUPPLY COMPANY**  
**ROSCO LABORATORIES, INC.**  
**ROSE BRAND THEATRICAL  
SUPPLIES, FABRICS &  
FABRICATION**  
**SAPSIS RIGGING, INC.**  
**SERAPID USA, INC.**  
**STAGERIGHT CORPORATION**  
**STRAND LIGHTING**  
**SYRACUSE SCENERY & STAGE  
LIGHTING CO., INC.**  
**TCI/LIGHTING DIMENSIONS**  
**TEXAS SCENIC COMPANY**  
**VARI-LITE, INC.**  
**VINCENT LIGHTING SYSTEMS**  
**WENGER CORP.**  
**ZFX, INC. FLYING ILLUSIONS**

## SUSTAINING MEMBERS

**A.C. LIGHTING INC.**  
**ALTMAN STAGE LIGHTING**  
**AMERICAN HARLEQUIN CORP.**  
**APOLLO DESIGN TECHNOLOGY**  
**ATM FLY-WARE**  
**AUDIO IMAGE**  
**AUERBACH & ASSOCIATES**  
**AURORA PRODUCTIONS**

## SUSTAINING MEMBERS

AUTOMATIC DEVICES COMPANY  
A V PRO, INC.  
BAER FABRICS  
BASH THEATRICAL LIGHTING, INC.  
BIG IMAGE SYSTEMS AB  
BMI SUPPLY  
B.N. PRODUCTIONS, INC.  
BROADWAY PRESS  
BULBMAN, INC.  
CAE, INC.  
CENTER THEATRE GROUP  
CHICAGO SPOTLIGHT, INC.  
CLEAR-COM INTERCOM SYSTEMS  
COLUMBUS MCKINNON CORPORATION  
THE CROSBY GROUP, INC.  
CROUSE-HINDS MOLDED PRODUCTS  
CUSTOM RIGGING SYSTEMS  
DARCOR CASTERS  
MARCEL DESROCHERS INC.  
DESIGNLAB CHICAGO  
WALT DISNEY IMAGINEERING  
DOVE SYSTEMS  
ELECTRONICS DIVERSIFIED INC.  
ENTERTAINING LIGHTING SERVICES  
FOY INVENTERPRISES, INC.  
GALA, DIVISION OF PACO CORP.  
GALAXY SOUND & COMMUNICATIONS  
GENI ELECTRONICS CO., LTD.  
GERRIETS INTERNATIONAL INC.  
GLANTRE ENGINEERING LTD.  
GRAND STAGE COMPANY, INC.  
H & H SPECIALTIES, INC.  
HAUSSMANN THEATERBEDARF GMBH  
HIGH END SYSTEMS, INC.  
HOLLYWOOD LIGHTS, INC.  
INTERSTATE CONSOLIDATION  
IRWIN SEATING COMPANY  
JCN  
JEAMAR WINCHES INC.  
JOYCE/DAYTON CORPORATION  
J.R. CLANCY, INC.  
KINETIC ARTISTRY, INC.  
R. LAWRENCE KIRKEGAARD & ASSOCIATES  
LE MAITRE SPECIAL EFFECTS, INC.  
LEE FILTERS  
LEHIGH ELECTRIC PRODUCTS CO.  
LIGHTING & ELECTRONICS, INC.  
LIMELIGHT PRODUCTIONS, INC.  
LITE-TROL SERVICE COMPANY, INC.  
LYCIAN STAGE LIGHTING  
THE MAGNUM COMPANIES, LTD.  
MAINSTAGE THEATRICAL SUPPLY, INC.  
MANN BROTHERS  
MARTIN PROFESSIONAL, INC.

## NATIONAL OFFICE

► continued from page 3

the theatrical sound playback and show control software application SFX. SFX allows users to play back sound effects from the computer, and even allows multiple, concurrent effects from one or more cue lists. ELS (Entertainment Lighting Services), located in North Hollywood, specializes in creating custom events such as movie premieres, press conferences, corporate parties, trade show booths, and industrial shows. They also produce original "publicity stunts" from dog sled racing on Hollywood Boulevard to dropping a giant matzo ball off a roof into a huge bowl of soup in Beverly Hills.

The Fort Wayne, Indiana based **Apollo Design Technology** has hired Allison Mutton as Director of Marketing and Rick Fast as Technical Engineer. Ms. Mutton is formerly with StaffMark and Mr. Fast comes to Apollo from L&D Tool and Die. Apollo Design technology is a manufacturer of customized gobos and also offers a broad line of glass and metal patterns along with a variety of wheels for intelligent lights.

**Limelight Productions, Inc.**, for the fifth time, was chosen to provide the lighting for the Dick Clark's New Year's Rockin' Eve. The annual show, which aired New Year's Eve on ABC, was held in New York City's Times Square. Limelight Productions, Inc., owned by William Beautyman, is celebrating its 25 anniversary this year.

**Vari-Lite, Inc.** is pleased to announce that Loren Haas has assumed the roll of Executive Vice President of Vari-Lite Production Services. Mr. Haas will be responsible for the worldwide network and subsequent expansion of Vari-Lite Production Services' rental operation.

## INDIVIDUAL MEMBER NEWS

Thoughtful Design, a presentation technology consulting firm based in Las Vegas and headed by George Kindler, has hired entertainment system designer, theatrical sound designer, author and educator **John**

**Huntington** as a Systems Consultant. Huntington will work as a Thoughtful Designs employee at the Harrison Production Services office in New York City and will be responsible for designing show control and A/V system. Thoughtful Design is a member of Production Resource Group.

## INDUSTRY NEWS

The Northern Committee of the **Association of British Theatre Technicians** is pleased to announce that their 1998 Theatre Equipment Trade Fair will be held November 11-12, 1998. This will be the seventh Theatre Equipment Exhibition held in the north of England by ABTT. The venue will again be the Royal Hall of the Harrogate International Conference Centre. For more information please contact Phil Windsor, 64 Shorefield Mount, Egerton, Bolton, Lancashire BL7 9EW, email: philwindsor@compuserve.com.

## LOST MEMBERS

The USITT National Office is requesting your assistance in finding the correct address for the following current USITT members: Jennifer Cicelsky, Renee Cooper, James Cuthrell, Anthony Bowman, Emily Merkner, Alison Norris, Bethany Long, Lisa Maher, Joe Martin and Cory Barber. If anyone knows the whereabouts of these members, please contact Tricia Neuburger at the National Office 800-93USITT or 315-463-6463 or email: usittno@pppmail.appliedtheory.com. We would like to ensure that these members continue to receive news from USITT.

*The "News from the National" column is specifically written for and about-USITT Members. Noteworthy items or information that would be beneficial to our members, can be submitted to the National Office.*

**Mary P. Buffum**  
*USITT Marketing and Public Relations Manager*

## LIGHTING DESIGN COMMISSION

## A GREAT OPPORTUNITY

Attention student lighting designers! If you are planning to attend the USITT Conference & Stage Expo in Long Beach, "Student Designers in the Lab: A Critique," is a great opportunity just for you. During this special session in the Light Lab, each participant will light an assigned scene from a Shakespeare play, performed live, using a repertory plot. Then, the work will be critiqued by three professional designers—Cindy Limauro, Chris Parry and Neil Peter Jampolis. This terrific educational opportunity is open to undergraduate and graduate students. To participate, all you have to do is send a copy of your résumé to:

Chris Popowich  
Carnegie Mellon University  
School of Drama, CSA 108  
Pittsburgh, PA 15213  
Hurry, time is running out!

**Ann M. Archbold**  
*Vice-Commissioner for Programming, Long Beach*

## COMMERCIAL ENDORSEMENT POLICY

USITT is very proud of its commercial members and encourages the research and development of new products by these members. Such improvements are a tremendous benefit to all USITT members.

We are pleased to announce the release of new products, and report on the activities and successes of commercial members, however, USITT does not recommend or endorse specific companies or products.

## LIGHTING DESIGN COMMISSION

### LONG BEACH SESSION HIGHLIGHTS

In just a few weeks we will gather together in Long Beach for the 1998 USITT Conference & Stage Expo. The Lighting Design Commission has a diverse slate of sessions to inform and enrich you. Two highlights include: a master class presented by Ellen E. Jones and Craig Wolf on Friday, March 20th in the Center Theatre which will focus on tips and techniques for coping with thrust stages; and a session that students won't want to miss, "Students Meet ESTA" on Saturday, March 21st, will be an informal reception (with food) where young designers and technicians can talk with representatives from leading industry manufacturers and suppliers.

If this is your first or twenty-first conference, we invite you to attend our commission meeting on Wednesday, March 18th. Bring your session ideas from Toronto and beyond. If you would like to work on a session, are interested in the Light Lab, or have ideas about where this commission should be headed, we would love to see you there. If you can't attend the conference or have some programming ideas that just can't wait, please send them to Jim Allen, Vice-Commissioner for Programming, Toronto (email: [jtallen@corvus.wright.edu](mailto:jtallen@corvus.wright.edu); tel: 937-775-4569 or fax: 937-775-3787).

This is your commission and we need your participation in order to serve you better. See you in Long Beach!

**Ann M. Archbold**  
*Vice-Commissioner for  
Programming, Long Beach*

## COMPUTERS

### WADING ON THE WEB

This is another in my series of compilations of sites on the World Wide Web of interest to theatre professionals. Bookmark the WOW! homepage [1] where

you will find archive copies of all the articles published in *Sightlines* and use it as the starting place for your exploration of these interesting and informative Web resources.

### USITT CONFERENCE & STAGE EXPO—LONG BEACH

The Web site for the 1998 USITT Conference & Stage Expo [2] is up and running and full of valuable information about this year's conference in Long Beach. You can also visit the "City of Long Beach, California" homepage [3], or the Long Beach Convention and Visitors Bureau site [4] where you will find information about attractions in the Long Beach area, including maps [5].

The RMS Queen Mary [6], now docked at Long Beach, California, is one of the conference hotels [7]. Information about the conversion from stately ship to hotel is available on the Web [8].

You can visit California State University, Long Beach [9] and see their Theatre Arts Department [10]. The University of Southern California [11], in Los Angeles, has a Web site with pages for their School of Theater's academic program [12].

While at the USITT Conference & Stage Expo, you can see many Los Angeles Attractions [13]. Traveling a little farther north, you will go to Hollywood [14] where you can visit Grauman Chinese Theatre [15]. A place to visit that is closer to Long Beach is Disneyland [16]. Read what is happening in the area in the Los Angeles Times [17].

### SITES SUBMITTED BY MEMBERS

R. Lee Kennedy [18] of the Department of Drama at the University of Virginia, Jose Henrique of Brazil [19] has a site for computer software [20], Liisa Kyrönseppä of the Theatre Academy of Finland [21], Ian Watson [22] of the University College Chester Drama Department [23], Leon Duynisveld [24] of Netherlands, and Thomas F. Soare of Sam Houston State University [25] sent in interesting sites. The "Costumers Manifesto" [26] has moved (a while ago) and has had a lot of new material. Geni Electronics International [27] sent in their home page.

If you have a homepage of your own, or if your theatre department or company has a Web site, I would be interested in hearing from you. Please e-mail me [[osweeze@siue.edu](mailto:osweeze@siue.edu)] the URL of your site, or any other sites that you want to share with the members of USITT.

**C. Otis Sweezey**  
*Vice-Commissioner for  
Electronic Communications*

- [1] [http://www.siu.edu/COSTUMES/WOW/WOW\\_INDEX.html](http://www.siu.edu/COSTUMES/WOW/WOW_INDEX.html)
- [2] <http://www.ffa.ucalgary.ca/usitt/lb.conf.info/preview.html>
- [3] <http://www.ci.long-beach.ca.us/>
- [4] <http://www.golongbeach.org/mainmenu.htm>
- [5] [http://www.golongbeach.org/area\\_maps.htm](http://www.golongbeach.org/area_maps.htm)
- [6] <http://members.aol.com/~bry1976/qnmary.htm>
- [7] <http://ca.living.net/trav/hotels/carhq.htm>
- [8] <http://www.uncommonjourneys.com/pages/qmconversion.htm>
- [9] <http://www.csulb.edu/>
- [10] <http://www.csulb.edu/~theatre/>
- [11] <http://www.usc.edu/>
- [12] <http://www.usc.edu/dept/theatre/DramaNet/>
- [13] <http://www.metrocast.com/LA/visitor.html>
- [14] <http://www.io.com/~dbrown/RealHistoryOfHollywood.html>
- [15] <http://www.mdle.com/ClassicFilms/FeaturedBook/book24.htm>
- [16] <http://www.disney.com/Disneyland/>
- [17] <http://www.latimes.com/>
- [18] <http://faraday.clas.virginia.edu/~rlk3p/>
- [19] <http://www.rio.com.br/~zehenriq>
- [20] <http://www.rio.com.br/~zehenriq/soft.htm>
- [21] <http://www.tiac.net/users/worldspe/winter97/vantinen.html>
- [22] [http://homepages.enterprise.net/davemanley/pages/f\\_doc.htm](http://homepages.enterprise.net/davemanley/pages/f_doc.htm)
- [23] <http://homepages.enterprise.net/davemanley/>
- [24] <http://www.geocities.com/SiliconValley/Peaks/9100/>
- [25] [http://www.shsu.edu/~drm\\_www/](http://www.shsu.edu/~drm_www/)
- [26] <http://www.costumes.org/pages/pagesindex.htm>
- [27] <http://www.geni-electronics.com/>

## SUSTAINING MEMBERS

MDG FOG GENERATORS  
MEHRON, INC.  
MEYER SOUND LABORATORIES  
MILLIKEN & COMPANY  
MOLE-RICHARDSON CO.  
MOONLIGHT ILLUMINATIONS  
MUSSON THEATRICAL, INC.  
MUTUAL HARDWARE CORP.  
NORCOSTCO, INC.  
NSI CORPORATION  
NUTECH INDUSTRIES, INC.  
NY FIRE-SHIELD, INC.  
BEN NYE MAKEUP  
OLESEN, A DIVISION OF  
ENTERTAINMENT RESOURCES INC.  
PHONIC EAR INC.  
PNTA, PACIFIC N.W. THEATRE ASSOCIATES, INC.  
PRODUCTION ADVANTAGE  
PRODUCTION ARTS LIGHTING, INC.  
PROTECH  
RICHMOND SOUND DESIGN  
SCHULER & SHOOK, INC.  
SCULPTURAL ARTS COATING, INC.  
SECOA  
SKJONBERG CONTROLS, INC.  
SOUTH DAKOTA STATE UNIVERSITY  
SPOTLIGHT S.R.L.  
SSP GROUP, INC.  
STAGE DECORATION & SUPPLIES, INC.  
STAGE DIRECTIONS MAGAZINE  
STAGE EQUIPMENT AND LIGHTING, INC.  
STAGE RESEARCH, INC.  
STAGECRAFT INDUSTRIES, INC.  
STAGEWORKS  
STEELDECK INC.  
STRONG INTERNATIONAL, INC.  
THE STUDIO SCHOOL OF STAGE DESIGN  
SURETY MANUFACTURING & TESTING LTD.  
TECHNICAL PROJECTS, INC.  
TECHNICAL SUPPLY JAPAN CO., LTD.  
THEATRE ARTS VIDEO LIBRARY  
THEATRE PROJECTS CONSULTANTS  
JAMES THOMAS ENGINEERING  
TIFFIN SCENIC STUDIOS, INC.  
TMB ASSOCIATES  
TOBINS LAKE STUDIO  
TOMCAT USA, INC.  
TR CONTROLS, INC.  
UNION CONNECTOR CO., INC.  
UNITED STAGE EQUIPMENT, INC.  
WARNER BROTHERS STUDIOS FACILITIES  
WYBRON, INC.

# 1998 Awards for Young Designers & Technicians in the Performing Arts

Join us in honoring the recipients...



AWARD FOR SCENE DESIGN

USITT  
*Zelma H. Weisfeld*  
COSTUME DESIGN & TECHNOLOGY  
AWARD



SOUND ACHIEVEMENT AWARD



AWARD FOR LIGHTING  
DESIGN



TECHNICAL PRODUCTION AWARD

## Marie Cloud

MFA student, University of Oklahoma

"[Marie] came to theatre with a background in architectural design, which gives her work as a scene designer a unique perspective characterized by an innovative use of space. Her approach to rendering is refreshing and most helpful in achieving the collaboration most theatre artists seek as well as aiding in communicating her design intentions."

- Jerry Lewis, University of Oklahoma

## Timothy Dial

MFA student, University of Tennessee - Knoxville

"Tim's depth and breadth of research is equal to that of a dramaturg as well as a designer. Because of his millinery skills, he has been asked to do workshops for regional master classes and for the University of Texas at Austin."

- Marianne Custer - University of Tennessee - Knoxville

## Andrew Dalzell

MFA student, University of Cincinnati College Conservatory of Music

"[Andrew] has a keen ability to merge technology and the true art found in the best of sound designers. His designs, although quite advanced in the technical approach, begin with the artistic vision born with the collaborative effort."

- Michael Hooker, University of Cincinnati College Conservatory of Music

## Kevin Shaw

MFA student, University of Southern Carolina

"Kevin excels in the use of computer application to support the lighting design process. [His use of] computer renderings to communicate lighting ideas as story boards [is a good example]. His work is distinguished by his creative vision, attention to detail, and support of the collaborative process."

- James Hunter, University of South Carolina

## Brian Stockmaster

MFA student, University of Wisconsin - Madison

"[Brian] is bright, goal-orientated, energized, and possesses wonderful communication skills which serve him well in collaborations with designers, painters, craftspeople and fellow techs. His technical skills are very strong and his knowledge about the strengths and applications of materials, tools, and processes is first rate."

- Dennis Dorn, University of Wisconsin - Madison

These Awards are made possible by generous gifts from  
their sponsors to

## THE NEW CENTURY FUND

Recipients will be presented with a check for \$1000 at  
the Fellows Address & Reception, March 19, 1998 at the

USITT CONFERENCE & STAGE EXPO

## Awards for Young Designers & Technicians in the Performing Arts

are given to individuals who have demonstrated excellence or outstanding potential in their discipline of design and technology in the performing arts while pursuing a graduate degree.

DESIGN  
EXHIBITIONS

This conference brochure is  
downloadable from the  
USITT web page at  
<http://www.culturenet.ca/usitt>

NEW  
PRODUCTS  
SHOWCASE

SPECIAL  
EVENTS

AWARD  
PRESENTATIONS

STAGE EXPO

TECH  
OLYMPICS

SESSIONS &  
SEMINARS

PROFESSIONAL  
WORKSHOPS





## ARCHITECTURE

**We're Too Small To Hire Design Professionals: Growing the Small Theatre** - Introduced by Kurt Schindler of ELS/Elbasani and Logan Architects and including Art Manke from "A Noise Within" in Glendale and Bob Caine from "The Actor's Alley" in North Hollywood, this discussion session follows the story of several theatre companies in the Los Angeles area as they take the leap to new space, engage design professionals, and deal with the world of building codes, municipal agencies, and advocacy groups to create a better theatre environment.

**Teach and Perform on the Same Stage?: The Design of a Teaching Theatre** - The special design challenges of a teaching theatre: creating a laboratory for education and experimentation in the performing arts, and a venue for a variety of performance types and audiences are examined in the presentation of recent projects addressing these issues by BOOR/A Architects from Portland and Hardy Holzman Pfeiffer Associates from Los Angeles.

**Are Aquariums Just Theatre for Fish?** - Chuck Davis, Senior Principal with EHDD Architecture and designer of the original Monterey Bay Aquarium, its Outer Bay Wing as well as the new Aquarium of the Pacific in Long Beach discusses the ways in which lessons learned from theatre design are applied to the modern aquarium and museum.

## COMPUTERS

**The Digitized Portfolio** - Tired of lugging around 14 pounds of matted photos, all your renderings, and tubes of draftings only to discover that what they want to see is what you left behind?? Digitize your work and store it on a CD-ROM or Zip disk. Lighten your load and be able to show more at the same time.

**Non-Graphic Uses of Computers in the Theatre** - Photorealistic 3D pictures of the designer's concepts may look good hanging in the lobby, but spreadsheets and databases probably do more to get the set, lights, and costumes onto the stage. Find out how to really put the computer to work on your next production.

**Using the World Wide Web as a Resource Tool** - Want to surf? Go to the beach. Have a show to design? Mine the World Wide Web. If you know how to find it, there is an incredible amount of information available to you just a few clicks of the mouse away. Come and learn what tools are available to help find what you need on the WWW.

## COSTUME DESIGN & TECHNOLOGY

**The Work of Deborah Dryden** - Fabric dyeing and painting can make a simple costume turn into a work of art. Appreciate this art while taking a retrospective look at Deborah Dryden's exceptional work as a designer, author, dyer and painter.

**Desmond Heeley- The Designer and His Inspiration** - Desmond Heeley, entertaining raconteur, renown designer and USITT Award winner, talks about the famous designers who inspired and mentored him in the early stages of his career.

## COSTUME DESIGN & TECHNOLOGY AND EDUCATION

**Heritage of Dr. Paul Reinhart** - A joint two-part session, presented by the Costume Design & Technology and Education Commissions, highlights the illustrious career of Dr. Paul D. Reinhart, educator and designer. Dr. Reinhart joins a panel of his former students who discuss his influence as both a collaborator and educator. A special exhibition of Dr. Reinhart's work will be presented at Stage Expo.

## EDUCATION

**Using Portfolios for Improving and Documenting Effective Teaching and Learning** - Participants write and speak about their teaching and their students' learning in this interactive demonstration of techniques for developing tenure and promotion documentation. Exercises include basic features of teaching the art and technology of portfolio creation.

**Team Teaching in the Collaborative Arts** - We collaborate as artists. Why is it difficult to collaborate as educators? Take part in a panel discussion on fostering development of the theatre student by creating a collaborative environment in the classroom.

## ENGINEERING

### 1999 NEC - What to Expect -

The final meetings of the National Electrical Code Panels have taken place and revisions to the 1999 edition of the Code, available in September 1998, are being finalized by the National Fire Protection Association. Several members of Code Panel 15 present the results and bring us up-to-date.

**Basic Electricity - The Next Generation (Electricity 201)** - In Pittsburgh, a large group of conference attendees reviewed the basic formulas of electricity, the types of electrical power and proper connection of simple dimmer packs. This tutorial explores more advanced topics related to the use of electrical power within the entertainment industry.

**Hemp & Counterweight Rigging Operation & Procedures** - A presentation by Jay Glerum, author of *Stage Rigging Handbook*, on how to safely operate; load, unload, raise and lower hemp and manual counterweight rigging.

## HEALTH & SAFETY

**Health and Safety for Women: Does it, or Should it Differ?** - A look at women's safety concerns in our industry. Are there concerns that are not being addressed? Are health concerns basically the same, regardless of gender?

**Ventilation: Your Last Breath** - A triple session focussing on one of the major health problems in theatre: providing clean, non-toxic air.

# USITT CONFERENCE & STAGE EXPO 1998

## Commission Sponsored SESSION HIGHLIGHTS



**Over-Production Revisited: Shame on us!** - A second look at a common problem in theatre productions, originally explored in 1991 in Boston. A positive session centering on solutions to problems rather than bemoaning our fate.

## LIGHTING

**Distinguished Lighting Designer for 1998** - Continuing the tradition of the Lighting Commission's highly popular "Distinguished Lighting Designer Series", award-winning Broadway designer Jennifer Tipton shares her work. Ms. Tipton is one of the foremost practicing lighting designers in this country. Don't miss the rare opportunity of seeing her and her work in person.

**Student Designers in the Lab — A Critique** - Several lighting students from across the country will have the opportunity to present their design work live in the Long Beach Entertainment and Convention Center's Center Theatre space and receive critiques from three of the country's finest educational and professional lighting designers: Cindy Limauro, Chris Parry, and Neil Peter Jampolis. Be there to watch a Shakespeare scene unfold under different lighting interpretations and witness the critiques!

**Designing with Intelligent Fixtures #1** - Emmy-winning professional lighting designer Jeff Davis tackles the challenges of designing with intelligent fixtures in today's legitimate theatre. Jeff will use the facilities of the Long Beach Entertainment and Convention Center's Center Theatre to present a demonstration of his findings.

## MANAGEMENT

**Changing the Cultural Environment at Work** - A heated supersession beginning with an electrifying dialogue addressing how to improve cultural diversity in our workplace then concluding with practical tools for this type of conflict resolution.

**International Touring Charrette** - Around the world with an international production. Small groups of Facility Managers, Producers, Production Managers, Stage Managers, and others go through the process of touring a show - problems, pitfalls, brainstorming and solutions for success. Join in this exploration.

**SM/PM in the Theatre - Fine Line Between Responsibility and Collaboration** - Stage Managers and Production Managers from both coasts examine the working relationships between their jobs. What types of conflict exist? What are the areas of mutual concern? What solutions are there for the future?

## SCENE DESIGN

**Theatre of the Fraternity: An Interpretation** - At the turn of the century, many fraternal organizations used state-of-the-arts scenery, costumes, lighting, and stage effects from the popular theatre as a means of deepening the initiation experience. In an exhibit at California State University, Long Beach museum, artifacts from the "secret" world of the fraternity will be displayed to explain this strange intersection of the fraternity and the theatre. On view will be rare costumes, colorful scenic sketches, unusual props, and exotic regalia. Two conference sessions help provide additional interpretation of this exhibit. First, a gallery walk with the curator and noted scholars will establish the context for the use of the artifacts and stage effects in the fraternal movement and second, an offsite trip to the Pasadena Scottish Rite Temple will provide a once-in-a-lifetime opportunity to examine the 60 drops originally installed in Little Rock, Arkansas in 1902 and moved to Pasadena in 1922.

**The Magic Portal: Toy Theatre Designs** - An exhibition of Toy Theatre designs by Joe Musil. Mr. Musil, a restoration artist, will explain the history of toy theatres, construction techniques of the models, and his career as a historian, theatre consultant and designer. *The World's a Stage: Theatrical Designs of Joseph Musil* exhibition will be on view at Stage Expo.

## REGIONAL

**Design and Production for Babylon 5** - Look for insights into the production design and construction process, the melding of constructed scenery with computer-generated scenery into a single camera shot, and the design and construction of out-of-this-world properties and costumes in this panel discussion with members of the design and production staff of the hit science fiction television series *Babylon 5*.

**Developing Your Career in 99-Seat Waiver Theatre** - An important part of the L.A. theatre scene, 99-Seat Waiver theatres provide numerous opportunities for theatre designers, technicians, and stage managers to work on productions that feature experienced film and television actors. Learn how to get involved in southern California theatre through design and production for these theatres.

**Special Effects Properties for Film and Television** - Two special effects props artisans, specializing in constructing props for film and television, including such films as *Men in Black*, *Broken Arrow*, and *Twelve Monkeys*, discuss their work.

**What Else Can You Do with a Theatre Degree in L.A.** - Experience and advice is offered from theatre graduates who have found gainful employment and fulfilling careers in southern California's entertainment industries outside traditional theatre through jobs in such fields as themed entertainment design, lighting technology for amusement parks, and production management for television.

**Special Effects Make-up** - Learn about some of the latest results in special effects make-up from make-up artists who work regularly in southern California's film and television industries.

## SOUND DESIGN

**The Production Process in Film Sound, and its Implications for Theatre Sound Design** - Mitch Chapman, from Sony Pictures, explores the relationship between the processes for sound design for theatre and sound design for film and television. Key concepts from this lecture will be examined at a tour of the sound facilities at Sony Pictures.

**Sound Playback for Theatre** - John Gottlieb and Eileen Smitheimer team up to present a special competitive demonstration of several digital audio systems currently being used to play back sound scores in theatres, such as computers, hard disks, minidisks, samplers, and stand alone systems.

**Sound In Themed Environments** - Ken Bell, from Richmond Sound Design, Ltd., puts together a panel discussion of sound designers who work in the theme park industry to discuss theatrical sound design techniques employed in commercial and exhibit settings.

## TECHNICAL PRODUCTION

**Employer Expectations for Technologists: Part 1 and Part 2** - Technical Directors from regional theatre and university settings assess expectations for a technologist leaving an academic program and entering the job market. Audience members join the discussion in Part 2.

**Technical Production Problem-Solving** - Attendees will be put into small groups to solve "Technical Challenges" (inspired by the design charrette at the Pittsburgh Conference). Bring your favorite problem and your thinking cap. This session promises to strengthen our skills as problem-solvers.

**Scenic Labor & Material Estimating Methods** - A "must see" for all Technical Directors. Ben Sammler reviews previously presented information and provides new material on methods of scenic labor & material estimating.

# ES

Entertainment Services &  
Technology Association  
P H S O U R S E S S I O N

**Ground Supported Truss** - A panel of experts from leading truss manufacturers discuss and demonstrate the proper use and application of ground supported truss. Discussion topics include load calculations, engineering, and safety inspection. Setup and operation are demonstrated using sample truss and rigging.

**Progress Reports on ESTA Standards** - A report from the Technical Standards Committee of the Entertainment Services and Technology Association discussing both the adopted, as well as pending, technical standards and recommended practices concerning control protocols, fog and rigging safety, photometrics and other topics related to technical production.

**DMX Distribution** - Panel discussion with hands-on demonstration of the ways and means to distribute DMX control signal between consoles, dimmers, scrollers and other devices. When to use splitters, terminators, routers and other devices for secure transmission.

## L R T

League of Regional Theatres  
S P O N S O R S E S S I O N

**A Tour of the Regional Theatres** - Visit 8-10 regional professional theatres in a slide tour presented by a representative of each of the theatres.

**Employment Opportunities in the LORT Theatres** - A panel of LORT production managers discuss how to find employment in the LORT Theatres, including what they want entry level people to know prior to being hired.

## PROFESSIONAL DEVELOPMENT WORKSHOPS

For a full and two-day intensive workshop designed to provide you with a great opportunity to learn from the professionals in the field of scenic construction, drawing, rendering and painting. The workshop is held at the California State University at Long Beach.

### Scenic and Audio Construction System Design Seminar

**Monday, March 16 8:00 am - 5:00 pm and Tuesday, March 17 8:00 am - 5:00 pm**  
For 25 years, Syn-Aud-Con has been providing training in designing sound reinforcement systems. The Design Seminar is the most comprehensive short-course in system design available today. The contractor, consultant, and advanced

system operator will enjoy this two-day audio and acoustic experience, and will leave with the knowledge and tools necessary to design sound reinforcement systems from the drawing board stage of the project. Registration includes lunches and coffee breaks. This Workshop takes place at California State University at Long Beach.

## Management & Leadership Academy #18 - Managing is Everyone's Business

**Monday, March 16 6:00 pm - 10:00 pm and Tuesday, March 17 9:00 am - 5:00 pm**  
Understanding ourselves and understanding our staff is the "key" to managing our business. Join colleagues at the 13th Academy and get to know yourself better as a manager and what it takes to sharpen those skills which make supervising and working with people the "key" to a successful organization. Monday evening will include the Personal Profile along with a session on what it takes to Teambuild. The Leadership track offered on Tuesday will examine Quality Management, Leadership Qualities, Strategic Planning, Dealing with Conflict, and Situational Leadership. Whether you have been a manager for years or are just beginning your career as a supervisor, the Management & Leadership Academy is something you won't want to miss.

### L.A. Scene Shop Tours:

#### Construction Techniques and Employment Opportunities

**Tuesday, March 17 8:30 am - 4:30 pm**  
Visit Los Angeles scene shops specializing in scenery construction for theatre, film, television, and industrial/commercial presentations. Participate in discussions on construction techniques and employment opportunities at Lexington Scenic and Cinnabar-California. You will have the opportunity to see some sights and buy your lunch at a midday stop at Universal City Walk.

#### Drawing, Rendering and Painting: The Historical Method

**Tuesday, March 17 9:00 am - 6:00 pm**  
As a supplement to the "Theatre of the Fraternity" exhibit and programming, a special professional development workshop is devoted to revealing the "secrets" used by scenic artists at the turn of the century. Participants will get the opportunity to experience hands-on drawing and painting techniques used by artists in Victorian and early twentieth-century studios. The workshop presenters all have extensive experience in researching and replicating historic wing and drop scenery and they will share their knowledge, along with the "tricks" of illusionary painting. In addition they will describe their successful incorporation of historic techniques

into teaching design and scene painting. This session will be offered at the scene shop at California State University, Long Beach.

### Photographing the Scene

**Tuesday, March 17**

**SESSION 1: 9:00 am - 12:00 noon**

**SESSION 2: 1:00 pm - 4:00 pm**

Two identical sessions demonstrating the technique and process of photography for the theatre are scheduled with nationally-known photographer of theatre and opera, Ken Howard. Ken Howard's photographs appear in *Time Magazine*, *American Theatre Magazine* and many other national publications. Mr. Howard is the Production Photographer for Los Angeles Opera, San Francisco Opera, Old Globe Theatre, and South Coast Repertory Theatre. His Broadway credits include *Hapgood*, *Pride's Crossing*, *Damn Yankees* and *The Who's Tommy*. Film credits include *Crossing Delancy* and *PBS American Short Stories Series*.

### Lighting Game Shows - "Wheel of Fortune"

**Tuesday, March 17 2:30 pm - 11:00 pm**

Jim Moody, lighting designer, USITT Fellow, Director-At-Large, and author leads this demonstration of techniques for lighting game shows and other TV situations on the "Wheel of Fortune" Sound Stage at Sony Pictures. Participants will have the opportunity to see the taping of *Wheel of Fortune* and *Jeopardy*.

### Real Ladies Wear Corsets!

**Tuesday, March 17 9:00 am - 6:00 pm**

A full day hands-on workshop devoted to pattern development, sizing, modification, construction & fitting of 19th Century Victorian corsets. Participants will develop, size, sew/construct and learn to fit a Victorian corset. This workshop takes place at California State University at Long Beach.

### Rendering on the Computer

**Tuesday, March 17 9:00 am - 6:00 pm**

Ready to give up your pencil? Explore the possibilities of computer assisted drawing and design using *Fractal Painter* and *Poser*. Following a session on the general use of these programs, participants will divide into groups by design areas of scenery, costumes or lighting for more in-depth exploration.

### Personality Profile System The Personality Profile System

**Tuesday, March 17 6:30 pm - 10:00 pm**

Understand the style you bring to your professional responsibilities. The Personality Profile Instrument helps you learn what type of manager, leader and worker you really are. The Personality Profile System helps you learn how to better create the motivational environment most conducive to success in your organization and enables you to better anticipate and minimize potential conflicts with others.

CONFERENCE & STAGE EXPO 1998

# STAGE EXPO

HOURS

Thursday, March 19

9:30 am - 5:00 pm

Friday, March 20

9:30 am - 5:00 pm

Saturday, March 21

9:30 am - 5:00 pm

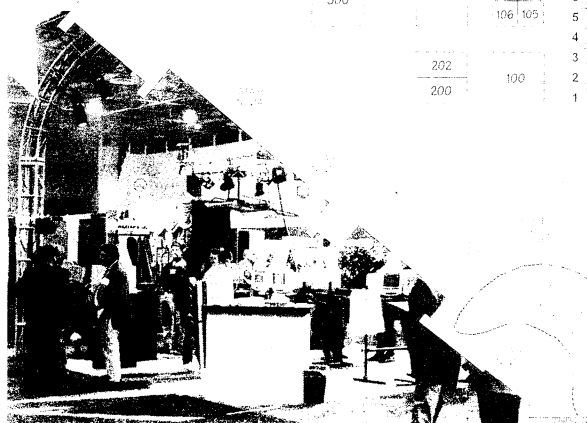
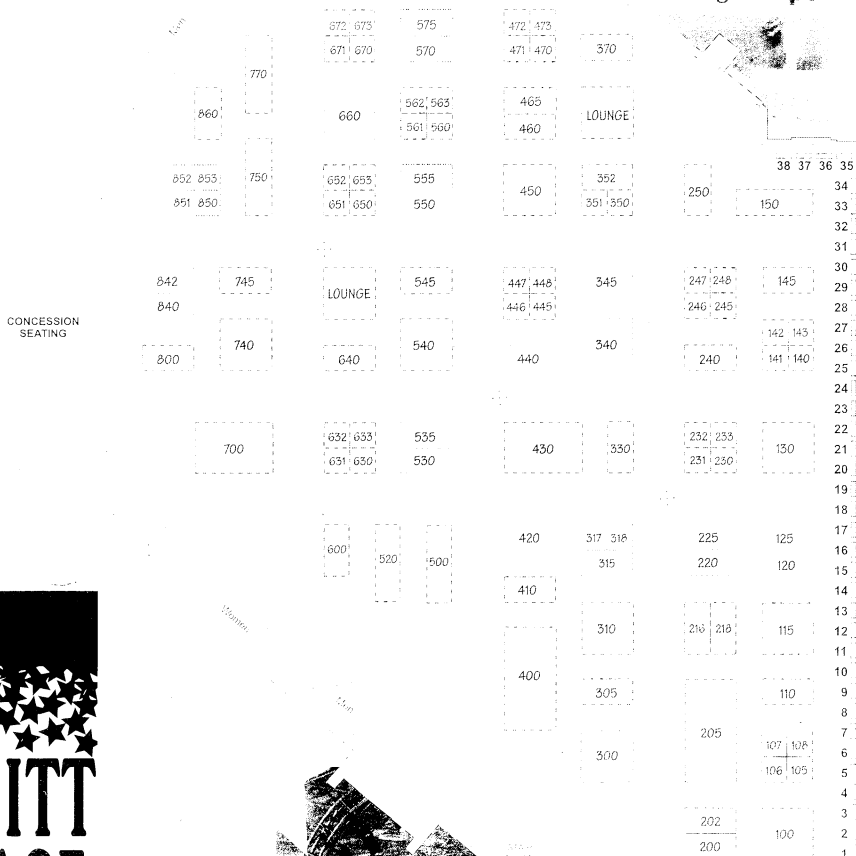
EXHIBITORS AT 12/1/97

- 220 A.C. Lighting, Inc.
- 105 Alcone/Mutual Hardware Corp.
- 447 AlterYears
- 750 Altman Stage Lighting
- 352 American Harlequin Corporation
- 108 Anchor Comm / Porta Com
- 370 Apollo Design Technology
- 232 ATM Flyware
- 107 Automatic Devices Company
- 631 Baer Fabrics
- 535 Barbizon



USITT  
DESIGN EXPO

## Stage Expo



- 230 Broadway Press
- 446 Bulbman, Inc.
- 125 CAE, Inc.
- 23 California Institute of the Arts
- 17 California State University Fullerton
- 4 University of Cincinnati
- 200 J.R. Clancy, Inc.
- 216 Clear Com Intercom Systems
- 350 Columbus McKinnon Corporation
- 650 Crescit Software Incorporated
- 231 The Crosby Group, Inc.
- 550 Custom Rigging Systems
- 13 University of Delaware
- 430 Electronic Theatre Controls, Inc.
- 305 Entertainment Services & Technology Association
- 120 GALA
- 530 Gothic Coatings, Inc.
- 100 The Great American Market
- 315 H&H Specialties Inc.
- 800 High End Systems, Inc.
- 3 Humboldt State University
- 330 Intertec / TCI + Lighting Dimensions
- 240 Irwin Seating Company
- 600 Kryolan Corporation
- 340 Lee Filters
- 860 Le Maitre Special Effects Inc.
- 106 Limelight Productions Inc.
- 246 LuxArt Conception Inc.
- 1 Mankato State University
- 150 Mann Brothers
- 745 MDG Fog
- 318 Mehron, Inc.
- 640 Meyer Sound Labs
- 448 Milliken & Company
- 18 University of Missouri - Kansas City
- 145 Moonlight Illumination Co.
- 560 Musson Theatrical - TV - Film
- 440 Neiman Supply Company
- 2 University of Nevada - Las Vegas
- 110 Norcostco Inc.
- 141 Ben Nye Makeup
- 500 Olesen
- 19 PCPA Theaterfest
- 20 Penn State University
- 351 Premier Lighting & Production Co.
- 250 Protech
- 205 Rosco Laboratories Inc.
- 300 Rose Brand
- 420 Sapsis Rigging Inc.
- 345 Sculptural Arts Coating, Inc.
- 660 SECOA
- 842 SSP Group Inc.
- 633 Stage Directions Magazine
- 700 StageRight Corporation
- 445 Stageworks
- 225 Steeldeck, Inc.
- 310 Strand Lighting
- 740 Strong International, Inc.
- 317 Surety Manufacturing & Testing Ltd.
- 540 Syracuse Scenery & Stage Lighting Co., Inc.
- 840 Technical Projects, Inc.
- 630 Theatre Arts Video Library
- 218 James Thomas Engineering, Inc.
- 545 Tomcat USA, Inc.
- 851 Tru Roll, Inc.
- 202 Union Connector
- 632 United Scenic Artists Local 829
- 410 Vincent Lighting/Future Light
- 460 Warner Bros. Studios Facilities
- 651 Weapons of Choice
- 400 Wenger Corporation
- 24 University of Wisconsin - Milwaukee
- 770 ZFX, Inc. Flying Illusions

USITT  
STAGE  
EXPO

MARCH 19-21

## REGISTRATION INFORMATION

\* Please complete all of the information requested on the REGISTRATION FORM. The DATABASE INFORMATION will be used to update current member information and for new members. Complete the BADGE INFORMATION as you would like your badge printed. Please copy the REGISTRATION FORM and complete an additional BADGE INFORMATION section for joint member or guest conference registrants.

\* Fill in the circles for the coded items you select and indicate the total amount for each section and the TOTAL DUE for all items. Mail forms with check payment, fax forms with credit card payments.

\* School purchase orders are accepted for payment. USITT will invoice schools the day the purchase order is received. In order to take advantage of advance discounts, actual payment from the school must be received by the deadlines noted. IF YOU ARE USING A PURCHASE ORDER FOR PAYMENT, SUBMIT YOUR PAPERWORK EARLY.

\* Registrations for Student Conference fees and membership renewals must be accompanied by a copy of your student ID.

\* Children under the age of 12 are not allowed at Stage Expo.

\* Complete conference information, including registration forms is on the USITT Web page at <http://www.culturenet.ca/usitt>

\* **QUESTIONS? Call USITT 800-93USITT**

## CONFERENCE REGISTRATION FEES

	ADVANCE	LATE/ ON SITE
	12/1/97- 2/12/98	After 2/13/98
	amount code	amount code
<b>FULL CONFERENCE</b> includes all conference sessions, seminars, Stage Expo, special exhibitions (except Professional Development Workshops and Awards Banquet). Non-Member registrants receive a full year of USITT membership.		
USITT Member	\$260 A2	\$310 A3
USITT Student Member	\$170 B2	\$215 B3
Non-Member	\$365 C2	\$415 C3
Non-Member Student	\$240 D2	\$285 D3
Joint Member/Guest (second person, same address)	\$200 E2	\$250 E3

**ONE DAY ONLY** includes all conference sessions, seminars, Stage Expo, special exhibitions for the day of your choice- Wednesday, Thursday, Friday or Saturday

\$200 F2      \$250 F3

**STAGE EXPO ONLY** includes admittance to the show floor and special exhibitions on the show floor.

\$30 G2      \$35 G3

## CANCELLATION AND WAIT LIST POLICIES

\* Conference Registration Fee, Professional Development Workshop Fee and Banquet Tickets: 80% refund of fees paid will be made if you cancel your registration prior to February 12, 1998. 50% refund will be made if you cancel your registration prior to March 2, 1998. NO REFUNDS are available if you cancel your registration on or after March 2, 1998.

\* There are minimum and maximum enrollments for Professional Development Workshops. Workshops with insufficient enrollment may be cancelled. You will be placed on a waiting list if you register for an over-enrolled workshop. Your registration confirmation will indicate your status and you may elect to register for an alternate workshop or cancel your registration for a full refund.

**ALL REQUESTS FOR CANCELLATION REFUNDS MUST BE MADE BY LETTER OR FAX.**

## PROFESSIONAL DEVELOPMENT

### WORKSHOP FEES

#### SYNERGETIC AUDIO CONCEPTS SYSTEM DESIGN SEMINAR

March 16 8:00 am - 5:00 pm, March 17 8:00 am - 5:00 pm. \$400 H1

#### MANAGEMENT & LEADERSHIP ACADEMY #13

March 16 6:00 pm - 10:00 pm, March 17 9:00 am - 5:00 pm. \$150 J1

#### L.A. SCENE SHOP TOURS: CONSTRUCTION TECHNIQUES &

EMPLOYMENT OPPORTUNITIES March 17 8:30 am - 4:30 pm \$ 30 K1

#### DRAWING, RENDERING AND PAINTING: THE HISTORICAL METHOD

March 17 9:00 am - 6:00 pm

Participant \$150 L1  
Observer \$ 75 L2

#### PHOTOGRAPHING THE SCENE

SESSION 1: Participant \$ 90 M1

March 17 9:00 am - 12:00 noon Observer \$ 50 M2

SESSION 2: Participant \$ 90 M3

March 17 1:00 pm - 4:00 pm Observer \$ 50 M4

#### LIGHTING GAME SHOWS - "WHEEL OF FORTUNE"

March 17 2:30 pm - 11:00 pm \$150 N1

#### REAL LADIES WEAR CORSETS

March 17 9:00 am - 6:00 pm Participant \$100 P1

Observer \$ 50 P2

#### RENDERING ON THE COMPUTER

March 17 9:00 am - 6:00 pm Participant \$130 Q1

Observer \$ 65 Q2

#### UNDERSTANDING YOUR PERSONAL & PROFESSIONAL

MANAGEMENT STYLE March 17 6:30 pm - 10:00 pm \$ 50 R1

## DESIGN EXPO

Enter your design work in DESIGN EXPO 98. See Entry Form and requirements in Preview Guide.

ENTRY FEE \$30 Z1      STUDENT ENTRY FEE \$20 Z2  
MODEL SHELF FEE \$5 Z3

## AWARDS BANQUET

Saturday, March 21 - Long Beach Entertainment & Convention Center. Happy Hour - 6:00 pm, Dinner - 7:00 pm

**MEDITERRANEAN PASTA** penne pasta with fresh herbs, dried tomatoes, olives in tomato basil sauce \$32 S1

**PACIFIC RIM SWORDFISH** grilled, presented on bok choy bed with ginger lime butter, rice, vegetables \$41 S2

**ROASTED PRIME RIB OF BEEF** rock salt and pepper crust, au jus and creamed horseradish, potatoes, carrots \$43 S3

## USITT MEMBERSHIP DUES RENEWAL

You may renew your USITT membership as you register for the conference. Renewals only, please.

INDIVIDUAL	\$80 U1	STUDENT	\$48 U2
PROFESSIONAL	\$125 U3	SENIOR	\$64 U4
JOINT	\$120 U5	ORGANIZATIONAL	\$125 U6
SUSTAINING	\$400 U7	CONTRIBUTING	\$800 U8

STUDENT MEMBERS MUST PROVIDE A COPY OF THEIR CURRENT STUDENT ID WITH THEIR RENEWAL.

## ENDOWMENT DONATIONS

Support the only organization in North America that directly grants support for performing arts design and technology projects and research with your tax deductible contribution to the USITT/Edward F. Kook Endowment Fund.

\$5 Y1      \$10 Y2      \$25 Y3  
\$50 Y4      \$100 Y5      Other \$\_\_\_\_\_ Y6

# USITT CONFERENCE REGISTRATION FORM

## COMPLETE THIS FORM. YOU MAY REGISTER BY:

**MAIL:**  
(check, credit card payments)

**USITT**  
**6443 Ridings Road**  
**Syracuse, NY 13206-1111**  
**315-463-6525**  
**800-938-7488 or**  
**315-463-6463**

**FAX:** (credit card payments)  
**PHONE:** (credit card payments)

## DATABASE INFORMATION

☐ New Member  
☐ Changes for current member

USITT Membership Number

Name

Title

Organization/Company Include Organization/Company in Mailing Address? ☐ Yes ☐ No

Joint Member Name (if applicable)

Joint Member Title

Joint Member Organization/Company

Mailing Address

City State/Province Zip/Postal Code Zip +4

Country Home Phone

Work Phone Fax #

Joint Member Work Phone Joint Member Fax #

E-mail address Joint Member E-mail address

Voting Representative (for Contributing, Sustaining and Organizational members)

## PROFILE INFORMATION

1. Do you or anyone registered jointly with you require assistance to participate in conference activities? A ☐ Yes B ☐ No

2. Is this your first USITT Conference? A ☐ Yes B ☐ No

3. How many USITT Annual Conferences have you attended?  
A ☐ 1 B ☐ 2-5 C ☐ 6-9 D ☐ 10-15 E ☐ over 15

4. Please check ONE box below indicating your PRIMARY area of employment or study

Live Performing Arts: Theatre/Opera/Dance

A ☐ Costume B ☐ Lighting C ☐ Scene Design  
D ☐ Management E ☐ Sound F ☐ Technical

Other Performance fields

G ☐ Television H ☐ Motion Pictures I ☐ Theme Parks

Professional Services

J ☐ Architect K ☐ Consultant L ☐ Engineer

Performing Arts Related Business

M ☐ Dealer N ☐ Manufacturer O ☐ Rental  
P ☐ Other

5. Which of these events have you attended in the past 2 years?

A ☐ ATHE B ☐ IAAM C ☐ LDI D ☐ LightFair  
E ☐ ShowBiz Expo East F ☐ ShowBiz Expo West G ☐ None

## BADGE INFORMATION

**USITT** CONFERENCE & STAGE EXPO 1998  
LEACH, C. LPO III

First Name or Nickname

Last Name

Title

Company/School/Affiliation

City

State/Province

Country (other than USA)

## CONFERENCE REGISTRATION FEE

FULL CONFERENCE

☐ \$260 A2 ☐ \$310 A3 ☐ \$170 B2 ☐ \$215 B3 ☐ \$365 C2  
☐ \$415 C3 ☐ \$240 D2 ☐ \$285 D3 ☐ \$200 E2 ☐ \$250 E3

ONE DAY ONLY

☐ \$200 F2 ☐ \$250 F3

☐ Wednesday ☐ Thursday ☐ Friday ☐ Saturday

STAGE EXPO ONLY

☐ \$30 G2 ☐ \$35 G3

TOTAL \$

## PROFESSIONAL DEVELOPMENT WORKSHOPS

☐ \$400 H1 ☐ \$150 J1 ☐ \$ 30 K1 ☐ \$150 L1 ☐ \$ 75 L2  
☐ \$ 90 M1 ☐ \$ 50 M2 ☐ \$ 90 M3 ☐ \$ 50 M4 ☐ \$150 N1  
☐ \$100 P1 ☐ \$ 50 P2 ☐ \$130 Q1 ☐ \$ 65 Q2 ☐ \$ 50 R1

TOTAL \$

## DESIGN EXPO

☐ \$30 Z1 ☐ \$20 Z2 ☐ \$ 5 Z3 TOTAL \$

## AWARDS BANQUET TICKETS

☐ # \$32 S1 ☐ # \$41 S2 ☐ # \$43 S3

TOTAL \$

## MEMBERSHIP RENEWAL

☐ \$80 U1 ☐ \$48 U2 ☐ \$125 U3 ☐ \$64 U4 ☐ \$120 U5  
☐ \$125 U6 ☐ \$400 U7 ☐ \$800 U8

TOTAL \$

## ENDOWMENT DONATION

☐ \$5 Y1 ☐ \$10 Y2 ☐ \$25 Y3 ☐ \$50 Y4 ☐ \$100 Y5  
☐ Other \$ Y6

TOTAL \$

TOTAL DUE

\$

## PAYMENT INFORMATION

☐ Check enclosed (in US funds payable to USITT)

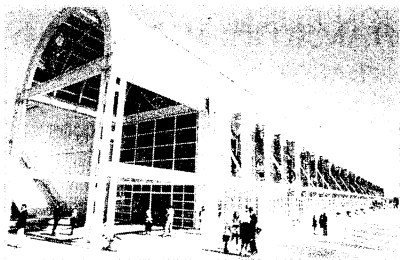
☐ Charge: ☐ AMEX ☐ Discover ☐ MasterCard ☐ Visa

Card #

Name on card Exp. Date

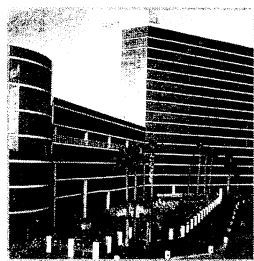
Signature

FS



**Long Beach Convention & Entertainment Center**  
300 E. Ocean Boulevard  
Long Beach, CA 90802

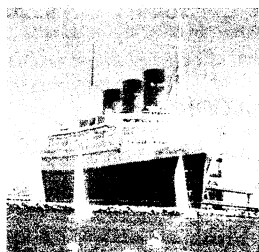
CONFERENCE  
HEADQUARTERS  
HOTEL



**Hyatt Regency Long Beach**  
200 South Pine Avenue  
Long Beach, CA 90802-4553  
single \$102 double \$102  
triple \$113 quad \$125



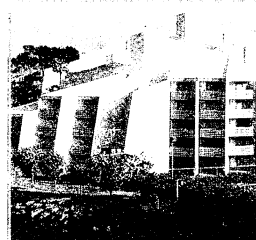
**HOTEL QUEEN MARY**



**Hotel Queen Mary**  
1126 Queens Highway  
Long Beach, CA 90802-6390  
Harborview Stateroom  
single/double \$102  
Landview Stateroom  
single/double \$92  
Inside Stateroom  
single/double \$82



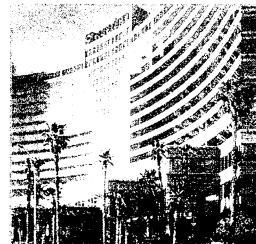
**WESTCOAST  
LONG BEACH HOTEL**



**WestCoast  
Long Beach Hotel**  
700 Queensway Drive  
Long Beach, CA 90802  
Garden View Room  
single/double \$75 triple/quadruple \$85  
Bayview Room  
single/double \$85 triple/quadruple \$95



**Sheraton Long Beach  
HOTEL**



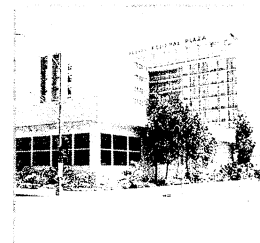
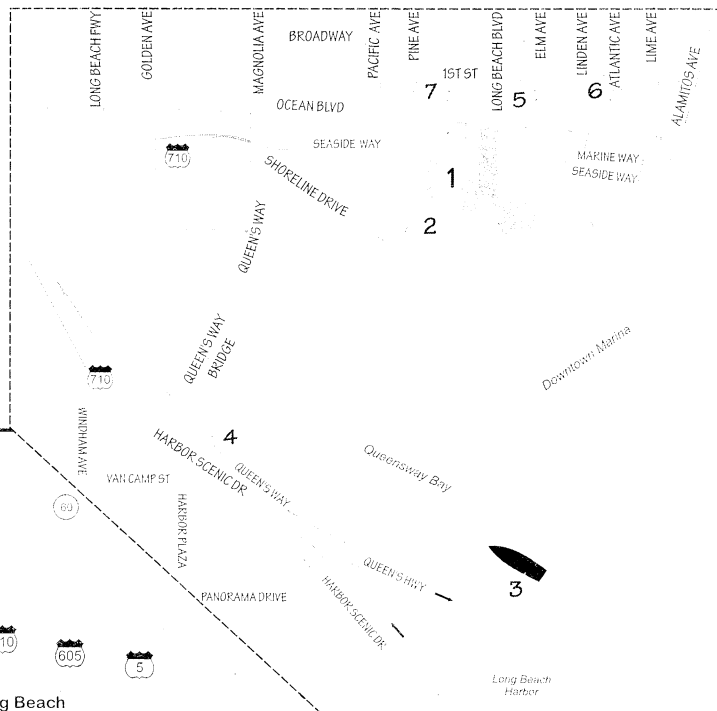
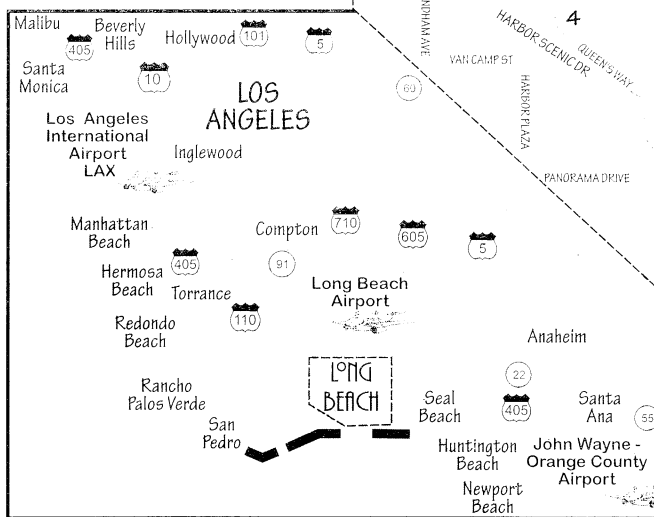
**Sheraton Long Beach Hotel**  
333 E. Ocean Boulevard  
Long Beach, CA 90802-4800  
single \$98 double \$98  
each additional adult \$20  
(maximum 4 persons per room)



**RENAISSANCE  
HOTEL**



**Renaissance  
Long Beach Hotel**  
111 E. Ocean Boulevard  
Long Beach, CA 90802  
single \$100 double \$100  
additional person \$10



**Courtyard by Marriott**  
500 East First Street  
Long Beach, CA 90802  
single \$87  
double \$87

# USITT CONFERENCE & STAGE EXPO 1998

## OFFICIAL HOUSING RESERVATION FORM

Registrant's Name		Address	
City	State/Province	Zip/Postal Code	Country
( )	( )	( )	
Telephone		Fax	

**HOUSING DEADLINE: FEBRUARY 20, 1998**

Arrival Date: \_\_\_\_\_ Departure Date: \_\_\_\_\_

### ROOM RATES

Place Rank Here	Hotel	Single 1 person 1 bed	Double 2 people 1 bed	Dbl/Dbl 2 people 2 beds	Triple 3 people 2 beds	Quad 4 people 2 beds
	* Hyatt	\$102	\$102	\$102	\$113	\$125
	Queen Mary					
	Harborview Stateroom	\$102	\$102	\$102	N/A	N/A
	Landview Stateroom	\$ 92	\$ 92	\$ 92	N/A	N/A
	Inside Stateroom	\$ 82	\$ 82	\$ 82	N/A	N/A
	* WestCoast					
	Garden View Room	\$ 75	\$ 75	\$ 75	\$ 85	\$ 85
	Bayview Room	\$ 85	\$ 85	\$ 85	\$ 95	\$ 95
	* Sheraton	\$ 98	\$ 98	\$ 98	\$118	\$138
	* Courtyard	\$ 87	\$ 87	\$ 87	N/A	N/A
	Renaissance	\$100	\$100	\$100	\$110	\$120

Check in the block at \_\_\_\_\_  
Right your room choice \_\_\_\_\_

12% state, city and room tax must be added to above rates

\$4.50 has been added to each room rate to help defray USITT's convention center rental

**PLEASE CALL THE USITT NATIONAL OFFICE FOR SUITE INFORMATION: 800-93USITT (800-938-7488) or 315-463-6463**

List ALL room occupants (please state ages of children):

\_\_\_\_\_  
\_\_\_\_\_  
\_\_\_\_\_

Special Requests: ☐ Handicapped accessible room ☐ Non-smoking room ☐ Rollaway bed

**Deposit:** Reservations must be guaranteed by providing a major credit card or deposit of \$100, in US Funds, by personal check, bank draft or certified check made payable to Long Beach Housing Bureau. Reservations NOT GUARANTEED may be subject to cancellation. I understand that if I do not arrive or cancel within 72 hours of my arrival date, I will be liable for my first nights deposit.

Credit Card #	Exp. Date	Circle one: Visa M/C Amex Discover
Cardholder Signature	Name as it appears on card	PLEASE PRINT

\$100 Check Enclosed Make checks payable & mail to:  
Long Beach Housing Bureau  
USITT Annual Conference & Stage Expo  
One World Trade Center, Suite 300  
Long Beach, CA 90831-0300



# THEatre Conference Employment SERVICE

...FAST  
...CONVENIENT  
...CONFIDENTIAL  
...COMPUTERIZED

system for posting jobs &  
scheduling interviews.

- ◆ Professional Employment
- Teaching Positions
- Summer Theatre Jobs
- Internships
- Graduate Assistantships

**+++PLUS+++**

Post-Conference Referrals

Your next stop is  
**TCES**  
at the

## USITT

CONFERENCE & STAGE EXPO 1998

Wednesday, March 18 -  
Saturday, March 21

We'll be there to work with you!

For complete details and registration  
materials, contact

**THEatre SERVICE**

P.O. Box 15282  
Evansville, IN 47716-0282  
phone: 812-474-0549  
fax: 812-476-4168  
Email: ts@evansville.edu

TRAVEL TO AND  
AROUND



GOVERNMENT

CONFERENCES

with



**BTI AMERICAS**

THE TRAVEL CONSULTANTS

the official USITT Conference  
travel agency

Save money on your airfare and car rentals! Win free travel! **BTI AMERICAS The Travel Consultants** is available to help you save 5-10% on your air travel to California.

Airline and car rental reservations may be made by fax, mail, phone or email. Use the TRAVEL REQUEST FORM to request flight and car rental information.

To inaugurate this new service, USITT will give a **FREE Hertz Gold Card club membership** (\$50 value) to the first 100 conference registrants who make their travel arrangements with **BTI AMERICAS!**

In addition, conference registrants using this service will be eligible for a drawing for a free flight.

Your use of the official USITT Conference travel agency allows the Institute to earn flights for special invited Conference guests and staff travel.

PROFESSIONAL



Schedule some time to play, too!

# USITT CONFERENCE & STAGE EXPO 1998

## TRAVEL REQUEST FORM

For your convenience you may make your conference airlines and car rental reservations by;



FAX :



**BTI AMERICAS**  
THE TRAVEL CONSULTANTS

315-428-9631



MAIL:

**BTI AMERICAS The Travel Consultants**  
620 Erie Blvd. West Suite 202  
Syracuse, NY 13204



PHONE:

**BTI The Travel Consultants**  
Ask for the **USITT Conference Desk**

**800-472-7447 or**  
**315-472-7737**



EMAIL:

**rosette@bittc.com**

DATE: \_\_\_\_\_ HOW MANY TRAVELERS IN YOUR PARTY? \_\_\_\_\_

NAME: \_\_\_\_\_

TELEPHONE: \_\_\_\_\_

OFFICE

HOME

FAX: \_\_\_\_\_

EMAIL: \_\_\_\_\_

ADDRESS: \_\_\_\_\_

CREDIT CARD NUMBER: \_\_\_\_\_

CREDIT CARD EXPIRATION: \_\_\_\_\_

CARDHOLDER NAME: \_\_\_\_\_

CARDHOLDER SIGNATURE: \_\_\_\_\_

AIRLINE FREQUENT FLYER NUMBER: \_\_\_\_\_

AIRLINE/NUMBER

AIRLINE/NUMBER

SEAT PREFERENCE: \_\_\_\_\_

AISLE \_\_\_\_\_

WINDOW \_\_\_\_\_

### AIR REQUIREMENTS

<b>DEPARTING</b>				
Date	From	To	Approx. Departure Time	Special Requests
<b>RETURNING</b>				
Date	From	To	Approx. Returning Time	Special Requests

### CAR REQUIREMENTS

City	PICK UP DATE	Approx. Time	RETURN DATE	Approx. Time	Type	Special Requests

Additional Requirements \_\_\_\_\_



### **Monday - Tuesday March 16-17**

A series of half and full day workshops focusing on design, management and technical performing arts topics.

### **Wednesday - Saturday March 18-21**

4 days of conference activities are filled with over 150 sessions targeting performing arts design, technology, architecture, management, engineering and production; computer demonstration and training center; New Products Showcase; and exhibitions of the art and crafts of stage design at Stage Expo.



Long Beach, California - a big city, down by the beach. Long Beach is sophisticated, funky and fun and its central Southern California location puts some of the world's most famous attractions within easy reach. The newly expanded Convention & Entertainment Center features spectacular glass concourses overlooking the Pacific Ocean. Long Beach has the charm, the excitement, the climate, a choice of three airports and a good selection of hotel rooms that will attract a large conference audience.



United States Institute for Theatre Technology, Inc. is the American Association of Design and Production Professionals in the Performing Arts. The mission of the Institute is to actively promote advancement of the knowledge and skills of its 4000+ members and to facilitate communication among individuals and organizations engaged in all aspects of design and production in the performing arts.

The USITT Conference & Stage Expo is produced annually by USITT in a North American city. This prestige event is a focal point for all performing arts professionals, attracting an estimated 3,500 attendees from all over the world.

#### **Conference and Membership Information**

##### **TD&T and Sightlines Advertising Sales:**

USITT National Office  
6443 Ridings Road  
Syracuse, NY 13206-1111  
800-93-USITT  
315-463-6463 FAX 315-463-6525

#### **Stage Expo & Conference Program**

##### **Advertising Sales**

USITT Sales Office  
101 Monarch Drive  
Liverpool, NY 13088-4514  
800-398-EXPO  
315-461-9088 FAX 315-461-9087

usitt

& The **COSTUME DESIGN AND TECHNOLOGY COMMISSION**

welcomes you to participate in...

**S**ANTA FE'S MOST INTERESTING ARTISTS AND SCHOLARS WILL SHARE THEIR EXPERTISE AT THIS YEAR'S **COSTUME SYMPOSIUM**. PROGRAMMING WILL INCLUDE:

**LECTURES** on

Santa Fe and Its Culture  
Georgia O'Keeffe  
Native American Folkwear  
Spanish Dance  
The opera *Salome* by Richard Strauss

**WORKSHOPS** on

Hair and Make-up for the Operatic Stage  
Opera Costume Crafts  
Millinery  
Flamenco Dancewear  
Costume Production and the Conceptual  
Medicine Wheel

**ENTERTAINMENT** by

Santa Fe Stages  
Maria Benitez Teatro Flamenco  
Santa Fe Opera

**FASHION SHOW** sponsored by

The Santa Fe Weaving Gallery featuring  
*Art to Wear* by some of Santa Fe's best  
fibre artists.

**REGISTRATION FEES**

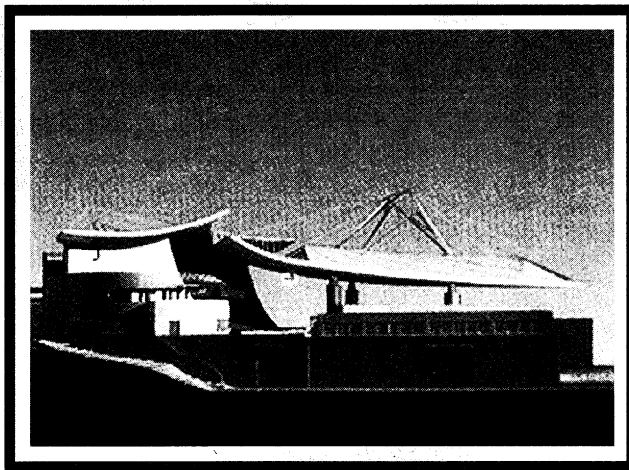
	<i>Before 4/15/98</i>	<i>After 4/15/98</i>
<b>Member</b>	\$285	\$335
<b>Non Member</b>	\$320	\$370

Your registration fee includes: programming, transportation to events, 4 meals and 3 theatre tickets. Pre-registration is required. Due to space restrictions at the Opera, enrollment is limited to the first 100 participants.

**Registration closes on May 15, 1998.**

**GUEST PRESENTERS WILL INCLUDE:**


Leanne Mahoney – Santa Fe Opera  
Bobbi Culbert – Institute for Spanish Arts  
Ellen Bradbury – Recursos de Santa Fe  
Melinne Owen – Fibre Artist  
Steven Bryant – Wigs & Make-up (SFO)  
Margaret Mitchell – Univ. of the Incarnate Word  
Susan Summa (knitter) – Summa Designs  
Mary Wayne-Thomas – Costume Crafts (SFO)  
Sharon King – Milliner (SFO)

**SPECIAL APPEARANCE BY DESIGNER  
MARTIN PAKLADINEZ**

*Santa Fe's magnificent new Opera House premieres in 1998.*

**H**igh above the desert floor, "The City Different", as it is often called, is 7,000 feet above sea level and sits at the foothills of the Sangre de Cristo Mountains. Founded in 1607, 13 years before the Pilgrims landed at Plymouth Rock, Santa Fe is the second oldest city in the U.S. The sun shines on the average of 300 days each year. The thriving Hispanic and Native American cultures can be experienced through their art and architecture, both modern and historic. Every form of artistic expression is represented in the city's 12 museums, 26 performing arts organizations and its many art galleries.

*Hotel information and registration form are on the reverse side.*

**COSTUME SYMPOSIUM 98**  
**JULY 23 - 25**  **SANTA FE, NEW MEXICO**

USITT

# COSTUME SYMPOSIUM 98

## JULY 23 - 25 SANTA FE, NEW MEXICO

### HOTEL INFORMATION

#### La Fonda on the Plaza

The La Fonda, a centrally located historic landmark built in 1922, is known for its award winning Spanish pueblo style architecture, unique paintings, and hand-painted and hand-carved wooden furniture, beams and corbels. The La Fonda is full of charm and Southwestern hospitality. (Except for our day at the Opera, all lectures and workshops will be held at this hotel.)

**Room Rates: Single \$165 Double \$165**

Reservations by phone / FAX must be received by **5/22/98**.

#### La Fonda Hotel

100 East San Francisco Street

Santa Fe, NM 87501

**505-995-2321/FAX: 505-995-2324**

**Reservations: 1-800-523-5002**

#### La Posada de Santa Fe

Situated on six historic acres of beautifully landscaped private gardens, La Posada de Santa Fe is a cross between an early 1800's Victorian inn and Pueblo-style casitas. The lobby and main rooms are in a Victorian mansion and the guestrooms are adobe cottages.

**Room Rates: Single \$120 Double \$150**

(additional person, after two: \$10 per person)

Reservations by phone / FAX must be received by **5/22/98**.

#### La Posada de Santa Fe

330 East Palace Avenue

Santa Fe, NM 87501

**505-986-0000/FAX: 505-982-6850**

**Reservations: 1-800-727-5276**

### REGISTRATION INFORMATION

Please complete this form and return to: **USITT**

**mail:** USITT

6443 Ridings Road  
Syracuse, NY 13206-1111

**fax:** 315-463-6525

**phone:** 800-93-USITT

315-463-6463

#### registration fees

	Before 4/15/98	After 4/15/98
Member	\$285	\$335
Non Member	\$320	\$370

A limited number of rooms are being held at each hotel. If one hotel is full when you call, please direct your reservation request to the other hotel. Mention USITT! For vacationers, hotels will honor Symposium pricing immediately before and after Symposium dates. **If you would like to sign up for a roommate contact, James Glavan at 512-471-5793 or j.glavan@mail.ulex.edu.**

### TIPS

**The Symposium begins on Thursday morning, July 23 and will end late in the evening on Saturday, July 25.**

-Take it easy. The high altitude means the air is rarefied.

-Watch your alcohol intake. One drink is like three at sea level.

-Use sunscreen and wear a hat. It's dry, less than 40% humidity. Use body lotion.

-Reservations are recommended at most restaurants. Casual dress is accepted.

-Nights and mornings are cool even in July. Bring something warm to wear.

-Drink plenty of water.

-It's so beautiful, come early and stay late.



Maria  
Benitez  
Teatro  
Flamenco

USITT Member Number \_\_\_\_\_

Name \_\_\_\_\_

Title \_\_\_\_\_

Company/School Affiliation \_\_\_\_\_

Mailing Address \_\_\_\_\_

City \_\_\_\_\_ State/Province \_\_\_\_\_ Zip/Postal \_\_\_\_\_ Country \_\_\_\_\_

Home Phone \_\_\_\_\_

Work Phone \_\_\_\_\_

Fax \_\_\_\_\_

Email \_\_\_\_\_

#### dining profile

Check any of the following:

☐ vegetarian ☐ beef ☐ chicken ☐ seafood

Food allergies? \_\_\_\_\_

#### payment information

☐ Check enclosed (made payable to USITT in US Funds)

☐ Amex ☐ Discover ☐ Mastercard ☐ Visa

Card # \_\_\_\_\_ Exp. Date \_\_\_\_\_

Name on Card \_\_\_\_\_

Signature \_\_\_\_\_

## COSTUME DESIGN & TECHNOLOGY COMMISSION

### 1998 SYMPOSIUM IN BEAUTIFUL SANTA FE

The Costume Design & Technology Commission welcomes you to participate in the 1998 Costume Symposium in the magical city of Santa Fe, New Mexico. This year we will begin on Thursday morning, July 23rd, and will end late in the evening on Saturday, July 25th. We are very excited about this event, and hope you will enjoy the many educational and entertaining activities that make Santa Fe so special.

At this year's symposium, some of the area's most interesting artists and scholars will share with us their work and experiences. Programming will include: **lectures** on "Santa Fe and Its Culture," "The Art of Georgia O'Keeffe," "Native American Folkwear," "A History of Spanish Dance," and the opera *Salome* by Richard Strauss; **workshops** on "Hair & Makeup for the Operatic Stage," "Opera Costume Crafts & Millinery," "Flamenco Dancewear," and "Costume Production and the Conceptual Medicine Wheel"; **entertainment** by Santa Fe Opera, Santa Fe Stages, Maria Benitez Teatro Flamenco, and a **fashion show** sponsored by the Santa Fe Weaving Gallery featuring "Art to Wear" by some of Santa Fe's best fibre artists.

Guest presenters will include: Leanne Mahoney, Santa Fe Opera; Bobbi Culbert, Institute for Spanish Arts; Ellen Bradbury, Recursos de Santa Fe; Melinne Owen, Fibre Artist; Steven Bryant, Wigs & Make-up for Santa Fe Opera; Margaret Mitchell, University of the Incarnate Word; Susan Summa (knitter), Summa Designs; Mary Wayne-Thomas, Costume Crafts for Santa Fe Opera; Sharon King, Milliner for Santa Fe Opera; and a special appearance by renowned costume designer Martin Pakladinez.

The organization and dates for the symposium were dependent upon the availability of the Santa Fe Opera Costume Shop personnel. Because of their busy repertory season, Leanne Mahoney, SFO Costume Shop Manager, chose Sat-

urday, July 25th as our "Day at the Opera"—a week later and the build period would be over and the shops nearly empty. This way, we will spend an entire day on the Opera grounds touring and attending programs by the Opera professionals, and that evening attend the opening night of the *Salome*.

The weekend of the USITT Costume Symposium, July 23-25, 1998, is also Spanish Market Weekend in Santa Fe, marking the height of the tourist season. Hotel rooms, restaurants, theatre tickets, and transportation will be at a premium. We are fortunate to have reserved blocks of rooms at two of the most beautiful and historically charming hotels in downtown Santa Fe, right on the Square, and within walking distance of the most popular restaurants, museums, shopping, and galleries. The hotels will honor our special symposium room prices immediately before and after the symposium dates, for those of you who might want to stay longer and make a true holiday of this event.

The registration fee for the symposium will include: all programming for three days, transportation to all events, four meals, and three theatre tickets.

Due to space restrictions at Santa Fe Opera, the enrollment for this symposium will be limited to 100 participants, so early registration is encouraged!

We look forward to seeing you this summer in beautiful Santa Fe!!

**Jim Glavan**  
*Vice-Commissioner  
for 1998 Symposium*

**Debra Krajec**  
*Commissioner*

## CITT NEWS

### NEW YEAR PLANS

On behalf of the Executive Committee and Board of Directors of C.I.T.T., I extend our best wishes to our USITT colleagues for a prosperous and happy 1998. C.I.T.T. has been busy making our own resolutions for the New Year. We plan to increase membership and

visibility within the entertainment industry in Canada.

Like USITT, we are a volunteer organization. The policies and operational initiatives are developed and executed by a core of dedicated directors and members. Chuck Homewood, our Executive Director, works closely with USITT to insure smooth delivery of services to Canadian members of USITT.

C.I.T.T. currently has a membership of 450 and our goal of 225 new members will be reached during this fiscal year. Directors Barry Hegland and Howard Van Schaick have developed an innovative marketing campaign. This one-to-one campaign will focus on C.I.T.T. as a catalyst for interaction and exchange between members and the industry as a whole. USITT assistance with this campaign is greatly appreciated.

Plans for our 1998 national conference are well underway. The Alberta Section will play host in Edmonton from August 21-23, 1998. An extensive array of pre-conference workshops is planned. Any USITT members within earshot of Edmonton are encouraged to attend. Details will be forthcoming very soon in *Sightlines*.

Thanks go to conference chair Lee Livingstone and Howard Van Schaick, Alberta Section chairperson for their excellent conference planning work.

C.I.T.T. will be at the Stage Expo in Long Beach. Drop by and say hello or renew old friendships. Get all the information you need on Toronto, host city for the 1999 USITT Annual Conference & Stage Expo. If the Canadian dollar continues its downward spiral, this conference will be value added on exchange alone.

C.I.T.T. is also hosting a national theatre conference together with the Professional Association of Canadian Theatres, Associated Designers of Canada, Canadian Actors Equity and the Playwrights Union of Canada in Saskatoon, Saskatchewan from May 21-24, 1998. This once-in-a-generation conference brings all the players under one roof to talk about the past, present and future directions of Canadian theatre. C.I.T.T. visibility and recognition will be greatly enhanced at the national level as we join our friends from other sectors.

**Bob Vernon**  
*C.I.T.T. President*

## UPDATES AND CORRECTIONS

And the winners are...! The student Tech Olympics is a spirited and integral part of the USITT Annual Conference & Stage Expo. Award trophies, which this year are made possible by Vanco Lighting Services, Orlando, Florida (a Production Resource Group company), are presented to the first place winners of each of the individual events. In addition, a traveling trophy is given to the team with the best overall score along with a cash prize of \$250 donated by Jim Moody of Moody Ravitz Hollingsworth Lighting Design Inc.

USITT wishes to express its sincere appreciation to the supporters of Tech Olympics and to extend an apology to Vanco Lighting Services, Orlando, Florida (a Production Resource Group company) for previously mis-attributing their sponsorship of this year's individual event trophy awards.

Frank Mohler, who reported in the January issue on the OISTAT History and Theory Commission meetings, would like hear from USITT members who have an interest in history and theory activities, research and projects. He can be contacted at 304 Glendale Drive, Boone, NC 28608; tel: 704-262-6374 (O), e-mail: mohlerfc@conrad.apppstate.edu.

## TECH EXPO

## VARIETY OF PROJECTS

In last month's *Sightlines*, I encouraged you to begin thinking about entering an exhibit in the next Tech Expo, to be held at the 1999 USITT Conference & Stage Expo in Toronto. If you have a few ideas, but aren't sure if any of them would be appropriate for Tech Expo, let me assure you that the Tech Expo Committee is looking for a wide variety of projects representing all the different skills and accomplishments of theatre technicians.

To be a little more specific, here is a list of the categories we have developed over the last twelve years. It's very similar to the category breakdown found in "Technical Brief" published by the Yale School of Drama. Tech Expo exhibits generally fall into one of these categories: Lighting, Sound, Management, Special Effects (pyrotechnics, electronics, miscellaneous), Painting, Projections and Photography, Props, Safety, Stage Mechanics, Scenic Materials and Construction (general information, decks, drafting, hardware, movement and tracking, other surfaces and materials, platforms, tools, devices), Stage Rigging (systems and components, tests and techniques), and Costumes (wigs, masks, apparel).

As an example, here is a list of a few exhibits from previous years. Costumes: "A New Way to Corset," "Masks from Pantyhose," "Ubu Roi Armor," "Ribbon Wigs"; Scenery & Props: "Rake Hinge," "Foam Molding Machine," "Magnetically-Coupled Rodless Cylinder to Automate Trap Door"; Lighting, Sound & Special Effects: "A Flexible Panning Device," "Neon: Not Beyond You," "Multi-Image 35mm Slides," "Remote Controlled Flash Effect." Copies of past Tech Expo catalogs are available from the USITT national office (800-93-USITT), or the fall issue of *TD&T* features detailed descriptions of the six monetary award winners from the 1997 Tech Expo.

For more information, please contact Dennis Dorn at 608-263-3359 (ddorn@facstaff.wisc.edu), or Mark Shanda at 614-292-0878 (shanda.1@osu.edu).

**Dennis Dorn**  
*Chair, Tech Expo Committee*

## USITT GRANTS &amp; FELLOWSHIPS

## PROJECT FUNDS AWARDED

The USITT Grants & Fellowships Committee and the USITT Board of Directors have awarded grant funds to Crystal Tiala for a research project that will culminate in a resource benefiting many Institute members. This project is dedicated to making the treasures of the Ballard Institute and Museum of Puppetry available via the World Wide Web. Named for Frank Ballard, master of puppetry, the Ballard Institute collects, restores and exhibits an amazing wealth of puppets and related items. The Web page will expedite making this collection accessible and, unlike other exclusively promotional Web sites, could provide pertinent information on construction methods, staging requirements, materials and safety issues. Ms. Tiala said, "Whether the needs of a production be a simple shadow puppet or a more complex mixture of masks and marionettes, USITT members would benefit by an accessible, archival and educational Web site dedicated to the world of puppetry."

**Tim Kelly**  
*Chair, Grants & Fellowships Committee*

## MANAGEMENT COMMISSION

## PDW CANCELLED

The Professional Development Workshop, "Management & Leadership Academy #13," which was scheduled for Monday, March 16 and Tuesday, March 17 at the Long Beach conference, has been cancelled.

## CLASSIFIED ADS

## SCENE DESIGN, LECTURER

Non-tenure track position. Teach two undergraduate courses each semester which may include scene design, rendering for the theater, CAD, historical styles, scene painting, mechanical drafting, or a general education introduction to theater course. Responsible for design and supervision of scenery program. Design one production each semester. Additional skills in lighting design, computer graphics, and /or sound are desirable. Professional experience desirable. Final candidates will be requested to submit portfolios. Review of applications will begin on March 4, 1998, and continue until the position is filled. Send letter of application, résumé, names of three references, or three letters of recommendation, and transcript to

W. Craven Mackie, Chairperson  
Department of Theater & Dance  
Southern Illinois University,  
Campus Box 1777E  
Edwardsville, IL, 62026-1777

SIUE is an equal opportunity employer and provider of services.

## TECHNICAL DIRECTOR

Center Theatre Group seeks Technical Director for Mark Taper Forum and Ahmanson Theatre, beginning immediately. Candidates must have extensive professional experience with IATSE crews. Send résumé, salary history and references to:

Center Theatre Group  
135 N. Grand Ave.  
Los Angeles, CA 90012  
Attention: Personnel Director  
EOE. Submission deadline:  
March 1.

## PRODUCTION MANAGER

Skylight Opera Theatre invites applications for the position of Production Manager, beginning in season 1998-99. This individual will manage all production elements of the five shows produced each season in the Skylight's own Cabot Theatre, as well as work within the values of our artistic mission, which is "to offer innovative and adventure-some programming of all genres of music theatre." The Skylight prefers an individual with experience producing musical theatre and opera. Please send cover letter, résumé and limited support materials to:

Joan Lounsbury  
Managing Director  
Skylight Opera Theatre  
158 N. Broadway  
Milwaukee, WI 53202  
Application deadline: March 1, 1998.

## ASSISTANT TECHNICAL DIRECTOR

Lied Center for the Performing Arts, University of Kansas, Lawrence, KS. Duties include: technical management; supervising tech crews; scheduling; record keeping; hands on technical work as directed by TD. Qualifications: Bachelors Degree; demonstrated knowledge of performing arts technical equipment and duties relevant to event production. Submit letter of interest, résumé, three references to

Fred Pawlicki  
Director of Operations  
Lied Center  
University of Kansas, West  
Campus  
Lawrence KS 66045-0501  
First review, March 5, 1998.  
Detailed position description available, call 785-864-3469.  
EO/AA Employer.



## CLASSIFIED ADS

**TECHNICAL DIRECTOR & ASSISTANT TECHNICAL DIRECTOR**

The University of Southern California announces two openings:

**Technical Director:** non-tenure track 9-month appointment with option for summer employment. This is a faculty position providing leadership in the technical production academic program and supervising faculty, staff, and students in the technical implementations of school productions. This position works in collaboration with the Director of Production, the Production Coordinator, the Faculty Scenic Designer, and the Theatre Manager. The technical theatre facilities include a 4,000-sq. ft. scene shop, 575-seat proscenium theatre, 86-seat and 70-seat flexible theatres, and 6,000-sq. ft. of scenic and prop storage. Responsibilities include: building scenery and properties, mounting them on the stage, overseeing work of the scenic and property crews during rehearsals and performances, supervising transporting of scenery from shop to stage as well as mounting, rigging, and maintenance of scenery. Operational duties: determine set costs, ordering construction materials, creates a construction calendar, and attends all production meetings.

**Assistant Technical Director:** staff/non-tenure track faculty position 10-month appointment. To work as a team member to assist Technical Director. Send letter, résumé and references for either position to:

Dean Robert Scales  
School of Theatre  
University of Southern California  
Los Angeles, CA 90089-0791  
FAX (213) 740-8888  
email rscales@mizar.usc.edu.

**PRODUCTION MANAGER**

**Position:** Production Manager (College Lab Technician) for the Queens College Department of Drama, Theatre and Dance. **Qualifications:** High School Diploma is required. B.F.A. or M.F.A. or subsequent professional experience in technical production, set construction and rigging, drafting, electrics and sound desired. Responsibilities include budgeting, scheduling, supervising crews, maintenance of Queens College Theatre equipment, supplies and systems, hiring support staff and supervising maintenance of other performance spaces as necessary.

Please submit cover letter and résumé only including the names, addresses and three references by March 15, 1998 to:

Professor Harry Feiner, Chair  
Production Manager Search Committee  
Drama, Theatre & Dance Department  
Queens College  
Flushing, New York 11367

Salary \$23,197–\$35,361 commensurate with qualifications and experience. Excellent benefits. Begins 9/1/98.

**ALLEN LEE HUGHES FELLOWS PROGRAM**

Arena Stage offers full-season fellowships to individuals of color and ethnic minorities pursuing careers in the professional theatre. Opportunities exist in all administrative and technical areas except for performance. \$10,800 stipend. Contact:

A. Lorraine Robinson  
Arena Stage  
1101 Sixth Street SW  
Washington, DC 20024  
202-554-9066

Application deadline: April 1, 1998.

**TECHNICAL DIRECTOR/LECTURER**

Professional faculty, 12 mo. position will supervise scenic/lighting/sound studios—teach one technical theatre course each semester starting 8/98. MFA or appropriate professional experience required. Solid communication skills desired to mesh with a strong collaborative environment. Responsibilities: laboratory supervision and organization for 3 mainstage and 3-4 studio productions. Portfolios at later consideration. Possible interview at SETC or USITT. Send letter of application, résumé and names of three references to

Carl Lefko  
Assistant Chair; Department of Theatre  
Box 6969 Radford Univ.  
Radford, VA 24142  
by March 23, 1998

Radford University is an Equal Opportunity, Affirmative Action Employer. Minority and women candidates are encouraged to apply.

**TECHNICAL COORDINATOR**

Alberta Theatre Projects seeks a Technical Coordinator. The successful candidate will have experience in repertory theatre, scenic construction, rigging, stage mechanics, sound/lighting technology, and computers. Responsibilities include scheduling, costing, budget tracking, general safety, and supervision of the production team. Strong leadership and management skills are crucial. Send application, including cover letter, résumé and salary expectations to:

Woodrow Rosenbaum  
Alberta Theatre Projects (ATP),  
220-9th Avenue S.E.  
Calgary, Alberta T2G 5C4  
fax: 403-294-7493  
e-mail: ATPops@ATPlive.com

**ESTA PUBLICATIONS**

ESTA, the Entertainment Services and Technology Association has produced three publications that belong in the well-informed technician's library: the *ESTA Standard for the Construction and Use of Wire Rope Ladders*, the *Introduction to Modern Atmospheric Effects*, and *Recommended Practice for Ethernet Cabling Systems in Entertainment Lighting Application*. The wire rope ladder standard describes how to make and use wire rope ladders safely, while the introduction to atmospheric effects offers guidance on selecting and using theatrical fogs. The *Recommended Practice for Ethernet Cabling Systems* describes preferred system topologies, hardware, and labeling practices for reliable lighting system operation. All three publications are available from the USITT National Office.

**ADVERTISING RATES & DEADLINE**

*Sightlines* classified ads are \$1 per word with a \$50 minimum. The deadline is the fifteenth day of the month prior to publication. Contact Michelle Smith at 800-93-USITT, 315-463-6463, or via e-mail at msm@pppmail.appliedtheory.com.

## LONG BEACH CONFERENCE &amp; STAGE EXPO

## DESIGNERS AT THE CONFERENCE

USITT has just received notification that J.C. Serroni will be unable to attend the 1998 USITT Conference & Stage Expo. A significant project has drawn Serroni away from our conference. While this is a disappointment, Serroni promises to include the USITT Conference & Stage Expo in his future plans.

There will be no lack of theatre designer work at the Long Beach Conference & Stage Expo. Exhibits of design work include, Design Expo '98, the Young Designers' Forum, the 1998 Theatre Design Charrette, the Theatrical Designs of Joseph Musil, and a Heritage Exhibit of the work of Paul Reinhardt.

Included in the international programming for the conference is a delegation of well-known Brazilian designers, as well as an important Chinese designer, and noted designer Desmond Heeley.

Another designer and director, Julie Taymor, whose *Lion King* is wowing audiences at the New Amsterdam Theatre in New York, is being honored by USITT, along with Eileen Blumenthal, noted critic and co-author of *Julie Taymor: Playing With Fire*. Ms. Blumenthal will be attending the conference to receive the Golden Pen Award and to autograph copies of the book which will be available for sale at the USITT booth.

The conference program will have complete details about all of these exhibitions and events.



## USITT CALENDAR

## FEBRUARY 12-28, 1998

- 12 USITT Election ballots due
- 12 Long Beach Conference Advance Registration Deadline
- 12 *Conference Programming*:
  - Preliminary Toronto Conference Professional Development Workshop proposal Forms due to VP Programming.
  - Toronto Conference preliminary session forms due to VP Programming
- 15 Editorial deadline for *Sightlines* (March issue)
- 20 Long Beach Conference Hotel reservations deadline

## MARCH 1998

- 3 *National Office*: Mail Board Packets
- 16, 17 Long Beach Conference Professional Development Workshops
- 17 *Board of Directors*: Meeting 7:00 p.m.
- 18 Long Beach Conference begins—Keynote and Annual Membership meeting at NOON
- 20 *Board of Directors*: Meeting—4:45 p.m.
- 21 *Conference Programming*: Toronto Conference Programming Session, oral presentations of proposed sessions presented to Commissioners—8:30 a.m.

## APRIL 1998

- 1 Editorial deadline for *TD&T* (spring issue)
- 15 Editorial deadline for *Sightlines* (April/May issue)
- 17 *Conference Programming*: Information for Toronto Conference scheduling meeting due to VP Programming (additions and changes for Toronto Conference sessions, including changes in priority and Professional Development Workshops proposal forms)
- 17 *Commissioners*: Confirmed contact information for all Vice Commissioner appointments for 1998/99 due to VP Commissions.

usitt sightlines

UNITED STATES INSTITUTE FOR THEATRE TECHNOLOGY, INC.

6443 RIDINGS RD., SYRACUSE, NY 13206-1111

PERIODICALS MAIL